

Esprit de Coeur

spirit of the heart

2023 - 2024
ANNUAL REPORT

HONOR ROLL OF DONORS
AND FINANCIALS



ASSOCIATED ALUMNAE AND ALUMNI OF THE SACRED HEART



What's Inside

| | |
|--|--------------------|
| President's Letter..... | Inside front cover |
| 2023-2025 Board Members..... | 1 |
| Sacred Heart Olympians..... | 2 |
| Save the Date – AASH National Conference | 4 |
| Class of 2024 Graduation Photos | 7 |
| Historic Sacred Heart Pedestal..... | 12 |
| Once Upon a Hill | 15 |
| Annual Report | 18 |

LETTER FROM THE PRESIDENT



*Kate Sawyer, 91st Street '86
President*

For some, fall is an end but, looking at the photos submitted of our new alumni and those that had reunions this year, I think of it as another type of beginning.

Our second meeting of the 2023-2025 National Board was a fun and productive weekend in St. Charles. I am so honored to be supported and guided by such a fantastic group. We continue to focus on developing our engagement focus from previous biennia to foster **C♥NNECTI♥NS** all around the country.

We had a terrific webinar in March and have another in the works for next January. We have many webinar ideas in mind, but please don't hesitate to share your ideas with any of us on the board or the National Office nationaloffice@aash.org.

We hope you joined us on October 16th as our Regional Directors host the combined, virtual "Connections of the Heart" Regional Meeting via Zoom.

Following the Regional Meeting is our biannual National Conference "Connections Through One Heart" hosted by the Los Angeles Chapter April 3-5, 2025. Please check aash.org for developing details and schedule information. All details are being finalized as quickly as possible!

In other news, in June, our 11-year superstar National Office Admin, Elizabeth "Betty" Gibson, left our AASH family. We will miss her enthusiasm and good humor but know that she will enjoy her well-deserved retirement.

We are testing a virtual National Office Director position with the fabulous Jeanne Asdourian. Jeanne is a graduate of Broadway, currently works at the school and was the Conference Chair for the 2017 National Conference in San Francisco. Jeanne is being supported by Sharon Mitsler who started her Sacred Heart journey at Bryn Mawr as a parent and teacher and is currently Director of Alumni, Parents of Alumni and Hospitality at the Academy of the Sacred Heart in St. Charles. Welcome to Jeanne and Sharon!

C♥NNECTI♥NS of the Heart,

Kate Sawyer, 91st Street '86
President

A handwritten signature in blue ink, appearing to be 'KS' with a flourish.



Elizabeth "Betty" Gibson and Jeanne Asdourian

On the cover: 2024 Baccalaureate Mass, Duchesne-Houston

On the back cover: Duchesne says farewell to Sr. Caire!

Editors: Donna Davis

Please send submissions to esprit@aash.org

Designer: Angela Schulte

2023-2025 BOARD MEMBERS



2023-2025 AASH Board and Staff

SACRED HEART OLYMPIANS



Georgia Bell '10
Sacred Heart High School, Hammersmith, London Athletics (1500m)



Blanca Hervás '21
Sagrado Corazon, Rosales, Madrid Athletics (4 x 400m relay)



Anabelle Smith '10
Sacre Coeur Glen Iris, Victoria, Australia Diving (3m synchronized)



Isabella Russekoff '18
Sacred Heart Greenwich, Connecticut Equestrian Showjumping



Carlota Ciganda '08
Colegio Sagrado Corazón, Pamplona, Spain Golf



Gaby Lopez '12
Colegio Sagrado Corazón, Mexico City, Mexico Golf



Noe Jouin '20
La Perverie Sacré Coeur, Nantes, France Field Hockey



Marie Simon '18
La Perverie Sacré Coeur, Nantes, France Field Hockey



Beth Yeager '21
Sacred Heart Greenwich, Connecticut Field Hockey



Saige Harper '24
Sacred Heart University, Massachusetts Rowing

Samantha McGill
Kilgraston Sacred Heart, Perthshire, Scotland Support team for Team Great Britain Tennis

“Within the Sacred Heart you have no country, but the whole universe.”

–St. Madeleine Sophie Barat



Daisy Mazzio-Manson '16
Newton Country Day School of the Sacred Heart, Newton, Massachusetts
Rowing fours



Phoebe Bacon '20
Stone Ridge School of the Sacred Heart, Bethesda, Maryland
Swimming (200m backstroke)



Elizabeth Dekkers '22
Duchesne College, University of Queensland, Brisbane, Australia
Swimming (200m butterfly)



Katie Ledecy '15
Stone Ridge School of the Sacred Heart, Bethesda, Maryland
Swimming (400m freestyle, 1500m freestyle, 4 x 200m freestyle relay, 800m freestyle)



Mewen Tomac '20
Lycée Sacre Coeur, Amiens, France
Swimming (100m backstroke, 200m backstroke)



Tiarna Davidson '16
Sacred Heart Schools, Atherton, California
Soccer



Lanihei Connolly '23
Baradene College of the Sacred Heart, Auckland, New Zealand
Swimming (100m Breaststroke)



Erin Gemmell '23
Stone Ridge School of the Sacred Heart, Bethesda, Maryland
Swimming (200m freestyle, 4 x 200m freestyle relay)



Paige Greco '15
Sacre Coeur Glen Iris, Victoria 2015
Cycling

SACRED HEART PASSPORTS

The trip to Italy was amazing! After we graduated from Duchesne-Omaha in 1969, Elizabeth (B.J.) Thiele Keating and I, Dolores Cunningham, spent years daydreaming about making this trip. Visiting Mater Admirabilis with my best friend, having a room with a view of the Piazza Trinita de Monte and the Spanish Steps was our dream come true!

We had a private tour of some of the sights of Rome. We started the tour at the base of the Spanish Steps and our guide pointed to Trinita de Monte and mentioned that she had attended school at the Sacred Heart! It was a thrill to meet another child of the Sacred Heart!

Thank you AASH for sending us our Sacred Heart Passports.



Elizabeth Thiele Keating '69 Duchesne-Omaha



Dolores Cunningham '69, Duchesne-Omaha



Debbie McDonald Grey (left) and Maureen Brown '80, PAL (right) pioneer of women's ice hockey



Debbie McDonald Grey, pioneer of women's ice hockey

Maureen Brown (Alumna SHSM '80, PAL current drama teacher, Alumnae Relations Coordinator and past VP of CASHA) and Debbie McDonald Grey (PAL of SHSH). Maureen found the SH connection in a competition of 2800 athletes at the Canada Games — and they are both hockey players. Debbie is a pioneer of women's hockey in the games and this was Maureen's first games playing for Team Quebec.

SAVE THE DATE AASH NATIONAL CONFERENCE



AASH National Conference April 3, 2025 - April 5, 2025 in Los Angeles

Lodging at Embassy Suites by Hilton Los Angeles International Airport North. Information about registration available online at aashla.org.

Guest Speaker: John Geary (SH Prep '11)

CEO and Co-founder of ABODU, an ADU Construction Company based in Redwood City, CA. Soon to be announced will be another guest speaker.

On Thursday evening April 3, 2025, following an Alumni Directors Meeting, the Shelagh O'Dwyer Cocktail party will take place. During the Conference, there are Regional Meetings to establish new Calls to Action and AASH Elections among other events. On Saturday, April 5th, the Cor Unum Luncheon, the Cor Unum Mass and Invocation will be at St. Monica's Catholic Church in Santa Monica, CA. To conclude, there is a wrap-up dinner being held in Marina del Rey.



*Guest Speaker John Geary
SH Prep '11*



To nominate someone for the 2025-2027 AASH Board of Directors, go to www.aash.org/nominate.

The new Board will be elected at the National Conference in Los Angeles, CA in 2025. The term will be from June 1, 2025 to May 31, 2027.

General Board Member Responsibilities

Board Members are required to attend the National Conference before election and at the close of the biennium and must also be able to attend the annual June Board Meeting in person in the year of election and the following year. Each Board Member is required to participate in the monthly Board Meeting call and any additional calls as needed as well as have the ability to respond to emails and in a timely manner.

Job Descriptions:

President

The President of AASH serves as the Chair of the AASH Board of Directors and the AMASC Representative. The President oversees the National Office and assists in the planning of and attends National and Regional Conferences while working closely with the Regional Directors and the local and national chairpersons. Presiding over all meetings of the Delegate Body and Board of Directors, the President plans the agenda and supervises any follow-up action that results from the meetings and gives presentations including the “State of AASH” address to various constituent groups, National Conference and reports to the international AMASC Board.

Vice President

The Vice President performs the duties of the President in the event of the absence or disability of the President and assists the President whenever necessary in the functioning of AASH. Assisting the President as needed, the Vice President oversees various AASH Board of Directors’ projects and committees.

Corresponding Secretary

The Corresponding Secretary is responsible for updating and maintaining the AASH social media channels and assists the National Office and the Board of Directors with e-blast message, correspondence and general communications. The Corresponding Secretary supports the Recording Secretary as needed.

Recording Secretary

The Recording Secretary coordinates with the President in arranging all conference calls, keeps an accurate written and audio recording of all meetings and provides copies of the minutes of all meetings to the Board of Directors. The Recording Secretary supports the Corresponding Secretary as necessary.

Treasurer

The Treasurer is responsible for all AASH financial transactions: disbursements, balancing AASH accounts, sends annual dues notices and pays AMASC dues on AASH’s behalf annually. The Treasurer also presents monthly and annual financial reports to the Board of Directors and the Delegate Body (National Conference), maintains a relationship with and helps oversee the financial management company (MONETA) and provides and supports AASH’s CPA with all IRS related filings.

Regional Director

The Regional Director attends and actively participates in all AASH Board of Directors meetings, prepares and sends Regional Director’s letters to all Heads of Schools, Alumnae/i Directors, Association Presidents, encourages attendance at Regional and National Conference and updates the National Office about events in the region. Regional Directors work closely with the Alumnae/i Directors and Association Presidents .

NOMINATIONS, CONT.

Cor Unum – One Heart

Sacred Heart alums are renowned for their accomplishments, achievements and contributions. They are active within their association, at their schools, in their communities, with their families and in many other venues. Each biennium, AASH salutes four of these alums with a *Cor Unum* Award. The presentation of these awards starts with your help in identifying outstanding alums. Please take time to nominate one or more Sacred Heart alums you feel deserving of this recognition.

You may nominate any Sacred Heart alum; it is not confined to your region.

Criteria for the *Cor Unum* Award:

- ♦ Excellence in one's work
- ♦ Loyalty to Sacred Heart Values
- ♦ The gift of self in service to others

Nominations are accepted from the membership at large. One outstanding person residing in each of the four regions (Central, East, South, West) is honored. **Nominations are made at <https://aash.org/corunum>.**

Maryliz de Vito Lincoln Generosity and Service Award

This award is granted a Sacred Heart graduate 35 or younger who has demonstrated outstanding support of and loyalty to her/his local alumnae/i association or to AASH. Created in honor of outstanding alumna and AASH past president Maryliz de Vito Lincoln, the award recipient will be chosen from nominations submitted by individuals and alumnae/i associations.

To nominate someone for the award, go to www.aash.org/maryliz.

The Maryliz deVito Lincoln Generosity and Service Award recognizes a young alumna or alumnus who has demonstrated outstanding support of and loyalty to their alum association.



Get Connected!

Not sure we have your latest email address? Contact us at NationalOffice@aash.org or call 314-569-3948. Visit our website www.aash.org and connect with us on Facebook (AASH-Associated Alumnae and Alumni of the Sacred Heart), Instagram (@sacredheartaash) and LinkedIn (Associated Alumnae & Alumni of the Sacred Heart).

PRESIDENTIAL MEDAL OF FREEDOM RECIPIENT



Katie Ledecy '15

Stone Ridge graduate, Katie Ledecy class of 2015 has received the 2024 Presidential Medal of Freedom from President Biden.

This is the nations highest civilian honor.

Recipients have made extraordinary contributions to “the prosperity, values, or security of the United States, world peace, or other significant societal, public, or private endeavors.

Katie is the most decorated female swimmer in history with 14 Olympic medals: 9 gold, 4 silver and 1 bronze.

She has also won 16 individual gold medals in World Aquatic Championships.

Katie’s dedication to her sport have been an inspiration to so many.

AASH would like to congratulate her on this extraordinary efforts and accomplishments.

CLASS OF 2024 GRADUATION PHOTOS



Forest Ridge School of the Sacred Heart, Bellevue, Washington



Fountain Academy, Nova Scotia, Canada



Barat Academy - Halifax, Nova Scotia, Canada

CLASS OF 2024 GRADUATION PHOTOS



Villa Duchesne, St. Louis, Missouri



Duchesne Academy, Houston, Texas



Sacred Heart Academy, Bryn Mawr, Pennsylvania



Carrollton School of the Sacred Heart, Miami, Florida

CLASS OF 2024 GRADUATION PHOTOS



Convent and Stuart Hall, San Francisco, California



Covenant of the Sacred Heart, 91st Street, New York, New York



Sheridan Road, Chicago, Illinois



Josephinum Academy, Chicago, Illinois

CLASS OF 2024 GRADUATION PHOTOS



Academy of the Sacred Heart - Rosary, New Orleans, Louisiana



Duchesne Academy, Omaha, Nebraska



Sacred Heart Schools, Atherton, California



Academy of the Sacred Heart - Grand Coteau, Louisiana



Academy of the Sacred Heart - St. Charles, Missouri

CLASS OF 2024 GRADUATION PHOTOS



Newton Country Day School of the Sacred Heart, Newton, Massachusetts



The Sacred Heart School of Montreal, Canada



Bloomfield Hills, Michigan



Sacred Heart Greenwich, Greenwich, Connecticut



Berchmans Academy, Grand Coteau, Louisiana

HISTORIC SACRED HEART PEDESTAL FROM THE CWE TRANSPORTED TO VILLA DUCHESNE



Rachel Drone Gehm '88 next to the City House pedestal

By Abby Wojcik, published in CWEA Griffin

For years, a large white marble pedestal sat incongruously in the parking lot of a Central West End apartment complex. Anyone who may have noticed it likely didn't realize it was the last remnant of a historic private school. Thanks to generous alumni, the pedestal has been moved to a new home — the grounds of a school founded by the same religious teaching order that once educated children in the CWE.

The pedestal's longtime location at the West End Terrace Apartments on Greenwich Court is the former site to one of the earliest schools founded by the Society of the Sacred Heart in the St. Louis area: City House and Barat Hall.

City House was an all-girls school founded by Mother Philippine Duchesne in 1827, and Barat Hall was the affiliated academy for boys. The schools were closed and demolished in 1968, leaving only a statue of Jesus standing on a granite pedestal inscribed with "Cor Jesus, Miserere Nobis!"

The statue of Jesus was donated by the Religious of the Sacred Heart to the parish of Saint Catherine of Siena, separating it from the roughly 50,000-pound pedestal. The statue was later moved to the Academy of the Sacred Heart in St. Charles, where it now resides.

It is speculated that the pedestal was too heavy to relocate, donate or archive at the time, explaining why it remained in the CWE facing Taylor Avenue since it was erected by the McCarthy Monument Co. in 1906.

That is, it remained there until June 27 of this year, when the pedestal was transported to Villa Duchesne to display on its upper campus, across from the 1929 Main Building.

As the nearest Sacred Heart School, Villa Duchesne absorbed students from City House and Barat Hall after their closing. Passionate alumni of the Villa Duchesne- City House Alumnae Association have been the primary force behind moving the pedestal to Villa's campus at 10801 Conway Road.

"The alums have been dedicated to this mission of moving the pedestal back to Villa for many years," said Deborah Schlattman, Villa's director of advancement. "So much so that we have alums who would have cocktail receptions at the old site of the pedestal, or they had their reunions there because that's where their home was."

Fortunately for Villa, the West End Terrace Apartments are owned by Kirk Mills and Mills Properties; Mills' daughter graduated from Villa Duchesne in 2023.

When the Alumnae Association approached Villa's head of school, Dr. Dawn Nichols, with their request, they were able to connect with Mills Properties and strategically work on transporting the pedestal. This was a fully funded donor project.

Specifically, Molly McKeon Hyde '75, Jim Hyde, Mary Niemann Ciapciak '75 and Bob Ciapciak (Barat Hall through eighth grade; St. Louis Priory '72) were integral in making this happen, as well as Bob Byrne with Byrne and Jones Construction and Grant Contracting.

The Villa Duchesne community is ecstatic to have this revered, educational monument returned to a Sacred Heart campus and reunited with students who deeply appreciate what it represents, Schlattman indicated. "Because it's not so much about the actual pedestal, it's about the piece of history coming home and forever being preserved on its home at Villa," she said.

St. Louis is somewhat of a headquarters for the Society of the Sacred Heart, as it is where Philippine Duchesne and two other sisters originally came from Europe to bring Sacred Heart education to America. There are 25 of the schools across North America, and The Academy of the Sacred Heart in St. Charles is the first Sacred Heart School in the St. Louis area.

"So, it's quite literally a very sacred spot, not only for St. Louis, but in the world and the history of Sacred Heart Education," Schlattman said.

St. Louis and the CWE are part of a rich, deep educational pedagogy with a mission grounded in relationships and focused on spreading the love of Christ in the world, a Villa Duchesne representative said.

"Our history truly is who we are. It is what makes Villa Villa," Alice Dickherber said, Villa's assistant head of school for strategic initiatives. "Because our history is so important to who we are, having this piece of our history here just enriches that for everybody in our community."

Villa Duchesne invites anyone passionate about St. Louis history, or who simply wants to see the pedestal and learn more to reach out to the staff or alumnae. As a historic symbol of spiritual enlightenment and a landmark for education west of the Mississippi, this pedestal is a meaningful relic that ties generations of young scholars together.



View of the pedestal at the West End Terrace Apartments before it was moved.

The Villa Duchesne - City House Alumnae Association championed for the pedestal to be moved to the Sacred Heart School.



TOMÁS DIAZ-LEE FUND

At Sacred Heart Sheridan Road, field trips like kayaking, Ropes, Space Camp and Washington, DC are unforgettable, milestone learning opportunities for middle school students. However, not all families can afford them. The Tomás Diaz-Lee Fund offers support.

Created five years ago by alumnae in memory of a beloved teacher, the fund helps every child experience learning beyond the classroom. Helena Plaminek ASH'88 said the founding committee came together "in the spirit of inclusiveness that Mr. Díaz-Lee and all our teachers at Sacred Heart instilled in us. Inclusiveness is essential to building community. We wish for all students to feel included not just in the classroom but outside, especially through self-esteem raising and team-building extracurricular activities, trips, and camps. These adventures that shape students today are times they will remember years from now, and everyone should be included."

The founding committee has inspired nearly 100 people to join them in giving. Each year, 25 students' class trips are funded. In recognition, the school presented its Goal IV Award to the committee in May 2024. Goal 4, the building of community as a christian value is one of the goals and criteria. Head of Schools Meg Steele said, "Goal IV speaks to our values of racial, ethnic and socioeconomic diversity, as well as inclusion and mutual respect. These alumnae and the work they have championed with this fund beautifully capture the essence of this Goal and its purpose in advancing our community."

Tomás Díaz-Lee taught at the high school from 1981 until its closure in

1993. "Tomás deeply cared about us not just as his students, but as people. Many of us stayed in touch with him after graduation," said Teresa Villa-Ignacio ASH'93. "He was a unique and vivacious being. When he died so young, at the age of seventy, I was devastated." Teresa and other alumnae felt compelled to honor his memory by helping others. "He showed us the importance of being citizens of our world and putting our beliefs in action," said Jane Steinfels ASH'92. "By remembering him with this fund, we strive to ensure that future generations of Sacred Heart students have every opportunity possible for learning."

Paula Nichols Bork ASH '93 said, "This fund not only honors Mr. Diaz-Lee, but all the incredible teachers I had in my 12 years on Sheridan Road who encouraged me, listened to me, educated me and challenged me. This is just one small way I can pay it forward to the next generations." Teresa agrees, "It's gratifying to see how the fund connects us – and Tomás – with the new generations."



The five awardees are pictured with the award presenter, Meg Steele, who is our Head of Schools.

Left to right, they are: Jane Steinfels ASH'92, Helena Plaminek ASH'88, Paula Nichols Bork ASH'93, Toni-Marie Gonzalzes Wahlberg ASH'93, Teresa Villa-Ignacio ASH'93, Meg Steele, Head of Schools.



The “Mothers Hill” and their mother.

Mother Rosalie Clifton Hill – Founder Extraordinaire

By: Mary Lococo Forsyth (El Cajon, SFCW);

Resource Consultant: Sr. Virginia Rodee RSCJ (SDCW)

At the turn of the 20th century, Sacred Heart education spread throughout the United States from coast to coast and border to border. Who could have foreseen in 1900 that Sunbelt cities like Miami, Houston and San Diego would someday host Sacred Heart schools? Who had the vision to realize the necessity for degree-conferring Catholic women’s colleges on the West Coast. The Society of the Sacred Heart faced the challenges of the new century, and Mother Rosalie Clifton Hill stands out as one of its preeminent visionaries.

Born in 1878, Rosalie Hill was a descendant of colonists from Catholic Maryland. Raised in Washington, D.C., Rosalie did not encounter Sacred Heart education until she was 18. At that age she enrolled in the Convent of the Sacred Heart near Montreal. She did not immediately embrace the discipline of Convent school life. But upon completing her Montreal experience, Rosalie had come full circle, and she decided to enter the Society of the Sacred Heart. She became a novice at Kenwood in 1899, and made her final profession in France in 1907. Her sisters, Teresa and Elizabeth, also became RSCJ. Once professed, Mother Hill was given an assignment at Eden Hall, Mahattanville, and in 1911, she was named Mistress General of Elmhurst. Her leadership ladder included positions as Superior at Maplehurst and Overbook. Rooted in eastern culture and educational exposure, Mother Hill probably expected that she would spend the remainder of her religious life on the East Coast. But The Holy Spirit and the spirit of the future St. Philippine had other plans for her. It was time for her to become a pioneer. It was time for her to go West.

In 1929, Mother Hill was named Superior Vicar of the Western houses of the Sacred Heart. At that time, the “West” comprised everything Sacred Heart from Chicago to the Pacific Coast. The new Vicar wasted no time in becoming a change agent. She proposed that Sheridan Road in Chicago provide education for boys. Ultimately this proposal resulted in the creation of Hardey School for Boys. Mother Hill was responsible for the governance of four colleges: Barat College, Duchesne College and two-year colleges at Forest Ridge and Menlo Park. Archbishop Hanna of San Francisco was in negotiations with the Society to transfer the Menlo program to a new women’s college in San Francisco. The location of the college would be atop a hill known by locals as “Lone Mountain.” As America entered the Great Depression, Mother Hill undertook a monumental construction program. A “modified Spanish Gothic” design was chosen. The center of the building complex was dominated by an impressive tower which accentuated the verticality of the site itself.



*San Francisco College for Women,
Lone Mountain*

ONCE UPON A HILL, CONT.

Always attentive to detail, Mother Hill specified everything from casement windows to “terrazzo floors in patterns and varied colors.” When the San Francisco College for Women was dedicated in early 1933, Archbishop Hanna commented:

“If ever the influence—the power of women—have been necessary, it is surely today when women have taken their place in the professions, in political life... Women have become important members, not only in the Church, but in the nation.”

In essence, Mother Hill made these words her mantra for the remainder of her life. She understood that building colleges required cultivating strong educators to teach in and administer those colleges. Thus began her commitment to provide opportunities for RSCJ to pursue graduate programs leading to the PhD. While Catholic universities were preferred for these studies, such schools were not always accessible on the West Coast. Secular universities would educate the religious. They would be the best secular universities: the University of California, Berkeley and Stanford University.



Mother Hill



Groundbreaking at San Diego College for Women, 1949

Meanwhile, the Holy Spirit intervened with an extraordinary gift. Since 1909, The Convent of the Sacred Heart in San Francisco was located in the Van Arsdale House on Jackson Street.

In January 1938, Mrs. James Flood began conversations with the Society concerning the gift of her home, an Italianate mansion on a Pacific Heights ridge overlooking San Francisco Bay. In the same year, Mrs. Flood gave Mother Hill the key to her home and roses from her garden. Mother later recalled “what a beautiful house has been given to us.” This was the second hilltop acquired by the Religious of the Sacred Heart in San Francisco. It was Mother Hill’s second hill. Were there more in her future?

1942 would open a new chapter in her journey as a pioneer. She received a letter from Charles Francis Buddy, Bishop of the Diocese of San Diego. He invited her to consider founding a college in his diocese.

A native of St. Joseph Missouri, Bishop Buddy was a true “child of the Sacred Heart.” His mother and sisters attended the Convent of the Sacred Heart known as “the Hilltop.” Charles and his brother were educated at the “Little Convent” of the Sacred Heart. This was a parish school attached to the Cathedral of St. Joseph. Ordained in 1914, Father Buddy spent many years serving the St. Joseph community. In late 1936, he was elevated to become the first bishop of the Diocese of San Diego. As early as a year after becoming head of the diocese, Bishop Buddy expressed a desire to bring the RSCJ to San Diego to found a women’s college. Five years later, earnest negotiations to that end would begin and succeed.

Wartime priorities precluded the immediate execution of Bishop Buddy’s vision for the San Diego College for Women. It was time for planning and dreaming. Various locations for the college were explored. Mother Hill resided in San Francisco, but she began a series of visits to San Diego to consider proposed locations. Given a street map by Bishop Buddy, she familiarized herself with the layout the city. In early 1945, the Bishop presented the Society with a modest house in the Old Town district of San Diego. At last, there would be

ONCE UPON A HILL, CONT.

a community of RSCJ in San Diego. Mother Hill would have a new home.

In the summer of 1945, Bishop Buddy took Mother Hill and her companions to a section of San Diego known as Linda Vista Heights (Lovely View). In a letter to the Western Vicariate, Mother Hill captured the magic of her first encounter with the site of a future university:

All this loveliness is within the city limits... Here the Bishop has purchased a long mountain ridge, the plateau of which is more than a hundred acres.

Initially the Bishop promised a gift of fifteen acres to the Religious; that was expanded to sixty- five acres. The San Diego College for Women would be the first component of the University of San Diego. A college for men, a law school and a seminary would form the nucleus of this new institution.

In this endeavor, Mother Hill proved herself a brilliant architect. She translated California's early Spanish political and religious history into a Spanish Renaissance style. Working with another RSCJ who had drafting skills, Mother Hill drew up plans and produced blueprints for the College. Imagine the amazement of architect Frank Hope on meeting his new client with blueprints in hand! In December 1949, the San Diego College for Women was granted a charter by the State of California. In the same month, 70 year old Mother Hill participated in the groundbreaking for the new school. As construction progressed, she monitored details both large and small. When a workman installing heavy doors commented: "Lady, you must



San Diego College for Women

expect these doors to last one hundred years." Mother Hill replied: "My good man, I expect them to last three hundred years." With remarkable speed, the College for Women opened for classes in early 1952.

Bishop Buddy envisioned an academy for girls as part of the Sacred Heart presence in San Diego. There were four girls' high schools in the diocese, and they could not accommodate the large number of applicants. IN 1957, an academy for girls was located on the campus of San Diego For Women. The Bishop gifted the Society property comprising the major seminary for the diocese. The seminary would be relocated on the campus of the University of San Diego, and a Convent of the Sacred Heart was established in El Cajon (a suburb of San Diego). Both an academy and a novitiate were opened in 1958. The buildings were humble, but they met St. Madeleine Sophie's expectation that the house be a home. The generosity of the Tavares family provided a completely new school facility in 1961. The beautiful campus included a magnificent chapel, state-of-the-art labs, classrooms and dormitories. The combination library/study hall contained a desk for every high school student. This would be the final founding of a Sacred Heart school in Mother Hill's extraordinary career.

In 1961, Mother Hill concluded thirty-two years as Superior Vicar of the West. She died on St. Madeleine Sophie's birthday in 1964. Shortly after her death, a letter from Bishop Buddy was found in her desk. The letter acknowledged the following:

“In reality you are the founder of the University San Diego as well as the San Diego College for Women... Without your perfect trust in the Sacred Heart, which in turn gave you the courage and vision, this vast project would never have started.”

In these words, Bishop Buddy summed up the larger life of the founder extraordinaire.

In honor of Mother Hill, the Alumnae/i of the Sacred Heart in San Diego have established an endowment fund in her name. The Mother Rosalie Clifton Hill Endowment Fund will provide in perpetuity financial assistance to the Network of Sacred Heart students attending the University of San Diego.



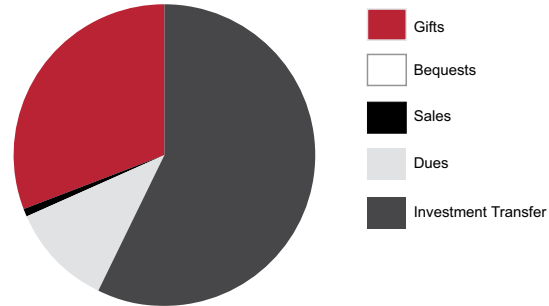
Mother Hill and Bishop Buddy

ANNUAL REPORT

Reflects gifts received June 1, 2023 — May 31, 2024

AASH SOURCES OF FUNDS

| | |
|--------------------------------|---------------------|
| Gifts | \$66,822.13 |
| Bequests | \$175.00 |
| Sales | \$1,599.35 |
| Dues | \$24,394.00 |
| Investment Transfer | \$125,000.00 |
| Investments Total | \$217,990.48 |



AASH USES OF FUNDS

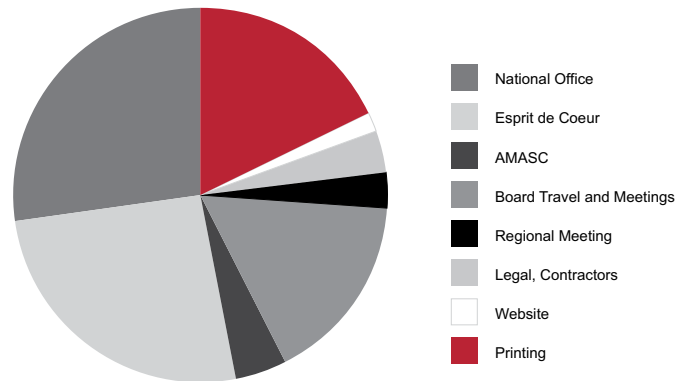
Income (Donations, Gifts & Dues)\$217,990.48

Expenses

| | |
|---------------------------------|-------------|
| National Office | \$30,864.06 |
| Esprit de Coeur | \$29,287.92 |
| AMASC | \$5,000.00 |
| Board Travel and Meetings | \$18,474.89 |
| Regional Meeting | \$3,500.00 |
| Legal, Contractors | \$4,006.78 |
| Website | \$1,939.89 |
| Printing | \$20,413.36 |
| Conference* | \$24,422.18 |

Total Expenses **\$137,909.08**

Net Loss.....\$80,081.40



*2023 Conference expenses received after past FY close

HONOR ROLL OF DONORS

SERAPHIM

\$10,000 & ABOVE

Elizabeth "Beth"
Guillaumin

ANGELS

\$1,000 - \$4,999

Margaret Badenhause
Nancy Calcagnini
Caroline Chiccarelli
Kathleen Favrot
Dianne Gonzales
Bonnie Graham
Marie James

Veronica McCaffrey

Alida Morzenti
Rowena Naidl
Marcy Petrini
Kathleen Sawyer
Beth Speck

MADELEINES

\$500 - \$999

Nancy Bowdring
Patricia Colbert
Charla Dziedzic
Pamela D'Ambrosio
Sandra Ellender

Carol Exley

Lindsay Hill
Brookr Janis
Cecile Jones
Ann Kittle
Angelina Kleinbub
Jeanne LaFazia
Jane B. O'Connell
Patricia Reiser
Pamela Styrsky

PHILIPPINES

\$250 - \$499

Nancy Agnew
Andrea Briefs-Ferris

Nancy Buckman

Pamela D'Ambrosio
Deborah Newhouse
Dunham
Mary Forsyth
Melanie Goudelocke
Marcia Hall
Ellen Harrington
Ellen Henahan
Kathleen Hirsch
Mary Ketchum
Elizabeth Kozak
Mary Lamy
Jane McAniff
Alice McMahon
Maureen McMahon

Michele Malloy

Elizabeth Maze
Rhonda Meegan
Evelyne Norris
Mary O'Grady
Carolyn Price
Carol Rigolot
Elin Schriver
Janet Shaw
Cynthia Stenger R.N.
Eileen Wiegand Sutula
Marcia Tufarolo
Diane R. Tymick
Ann Marie Walker

CHERUBS

\$100 - \$249

Margaret Ackerman
Marguerite Adams
Susan Alessi
Laila Almeida, M.D.
Gloria Gramatges
Anderson
Jeanne Asdourian
Judith Ashleman
Maria Asteinza
Sarah Jean Avery
Frances Bailey
Marianne Basila
Alice Berdan
Meg Beugg
Ileana Blanco
Catherine Bobzien
Virginia Bolan
Barbara Boudreaux
Catherine Brady
Marianna Brinck
Mrs. Betty Brock
Florence Bryan
Barbara Anne Cagney
Adele Keogh Cahill
Janet Callow
Diane Caselli
Sarah Cassidy
Stephanie Chaczyk
Maureen Chott
Mr. & Mrs.
Robert J. Ciapciak
Kathrene Clark
Judith Reach Condit
Rosemary Coleman
Judy Conley
Katharine Conroy
Elizabeth Corbett
Cathy Crofton
Laura Cuesta
Dr. Mary Ellen Curran
Colleen Curry
Louise Dagit
Caroline Davis
June Davison
Mary Jo Dawson
Lenore De Csepel
Leah DeJoseph
Donna Deeley
Mary Desloge

Julie Burns Doll
Catherine-Mary Donovan
Deborah J. Donovan
Emilie Dressler
Francesca Eastman
Mariah Echele
Karen Edmunds
Claudette Eggert
Karen Emge
Mary Farrell
Andrea Fisher
Betsey Fuller
Barbara Ferguson
Honour Fleming
Catherine Fitch
Mary Katharine Green
Margaret Gebhard
Marion Glennon
Jeanette Garrison
Angela Geraci
Louise Hatch
Susan Hays
Carolyn Henry
Alice Herman
Jane Hickenlooper
Nancy Hogan
Jo Ann Holland
Rita Houlihan
Elizabeth Berg Jachman
Kathleen Kalamarides
Mary Kane
Catherine Kaye
Glenna Keene
Kathryn Keigher
J. Caroline Kelleher
Joan Kelley
Carol Sue Kruise
Joan Lehman
Nano Little
Susanna Lane
Dr. Elizabeth
Laquidara Ph.D.
Judith Leach
Barbara Lopiccio
Regina McGrath
Katherine Logsdon
McCracken
Mary McNeill
Vita McCall
Mary McGowan
Irene E Mackenroth
Brenda MacLean

Dorothea Margiotta
Elizabeth Marr
Alice Mason
Deborah Matlof
Anne Milligan
Jenee Monaco
Elizabeth Monahan
Terry Brown Moyer
Elizabeth Moore
Deborah Moriarty
Diana Munro
Jacqueline Niekamp
Mary O'Keeffe
Kathleen "Caitie" O'Shea
Carol Parks
Sandra Phillips
Laurie Pichnarcik
Kathleen Piper
Elizabeth Plater-Zyberk
Theresa Quinn
Lucy Rauch
Ellen Ribaudo
Dr. Amy C Richardson
Dr. Melissa Ring
Dee Dee Rohne
Maria Scanga
Joan Schoettle
Gertrude Schneider
Mary Scholl
Mary Schott
Kathleen Schwarz
Anne Severs
Ellen Shafer
Sandra Shargabian
Kathy Sheehan
Brenda Simpson
Marie Somers
Constance Strong
Dr. Barbara Sullivan
Harriet Switzer
Susan Tierney
Dr. Susan Tobia Ph.D.
Betsy Tomlinson
Suzanne Weiss
Mary Werle
Susan Whalen
Erin Wheeler
Ann White
Monica Williams
Patricia Willis

FRIENDS

\$1 - 99

Kristen Andree
Mary Sue Babb
Mary Barrett
Deborah Barton
Jeanne Beck
Sandra Beecher
Herlinda Belcher
Celeste Blasé
Jean Bordon
Kathleen Bradley
Melanie Brent
Mary Bricker-Jenkins
Kathleen Brown
Nancy Brown
Mary Ellen Burke
Dr. M. Linda Burke
Alice Burlinson
Helen Cannistraci
Dorothy Carpenter
Mary Carroll
Virginia Waterman Casey
Christine Cassidy
Brown Clark
Sally Cliff
Katharine Cobb
Deanne Colligan
Ellen Collins-Boyce
Sheila Connolly
Sandra Czecholinski
Olha Della Cava
Maria Diaz
Mary Diehr
Ann Diekemper

Joan Dollinger
Dolores Donahue
Dolores Donihi
Anne C Dryden
Barbara Dwyer
Sr. Jean Dwyer, D.C.
Trish Ellingwood
Rosaleen Farley
Rosemary Farley
Conchy Fajardo-Hopkins
Rosemary Fasl
Laurel Fernandes
Sr. Bunny Flick, RSCJ
Jo Ann Frost
Mary Gann
Patricia Gallacher
Pamela Gaynor
Lisa Gilkeson
Jane Ginn
Judith Gittleman
Margaret Gray
Nancy Jane Griffith
Beverly Groneck
Yvonne Gwin
Margaret Haberin
Camille Hawk
Betty Henderson
Sr. Iren Herbst, RSCJ
Jeanne Hevesy
Lucille Hornby
Margaret Hughes
Mary Ish
Kathryn Jordan
Sr. Sharon Karam, RSCJ



HONOR ROLL, *continued*

Julie Kenary
Sheila Keenan
Susan Kennedy
Sara Kestner
Patty Kinney
Elizabeth Kluba
Susan Krakora
Christine Knoten
Debra Kunces
Dr. Norma LaSalle
Judith Lavallee
Zelia LeBeau
Sr. Lynne Lieux, RSCJ
Margaret Liggett
Susan Lix
Marilyn Lorenz-Weinkauff
Patricia McCarthy
Martina Chukayeff-
McCarthy
Mary Beth McGivern
Mary McIsaac
Maureen McKinney
Judith McNamara
Anne Mabley
Kathryn Mahoney
Kay Mallon
Cynthia Marler
Marcia Marino
Mary Mazur
Pauline Mifsud
Bill and Kristy Miller
Elizabeth Moynihan
Margaret Munch, RSCJ
Stephanie Murphy
Kerry Muzyka
Rosemary O'Connor
Valerie O'Keefe
Michelle O'Neal
Nancy O'Neill
Theresa Nangle Obermeyer
Sharon Ohlms
Sr. Clare Pratt, RSCJ
Maria Parra

Denise Pool
Deborah Reinstatler
Sr. Irma Patricia
Reiss, RSCJ
Patricia Rice-Hellmuth
Canice Rice Jr.
Kj Rink
Angela Robbiano
Suzanne Santora Robinson
Sr. Virginia Rodee, RSCJ
Ellen Romeiser
Daphne Root
Margaret Saunier
Molly Schaaf
Susan Scherpereel
Christine (Obert) Schilling
Deborah Schulz
Mary Sears
Elaine Sharer
Micheal Sheridan
Catherine Simmons-Gill
Isabel Singletary
Lisa Slaughter
Tiffany Spinella
Patricia Stack
Andrea Steele
Sr. Margaret Strom, RSCJ
Patricia Sullivan
Jean Summerfield
Ann Taylor, RSCJ
Eloisa Thompson
Mary Thompson
Jo Trogdon
Francesca Vallone
Sr. Deanna Rose
von Bargaen, RSCJ
Mary Ellen Weber
Melissa Weiksna
Cynthiia Whalen
Shirley Wicks
Marie King Wolfe
Peggy Yingling

MEMORIALS AND HONORARIA

In Memory of

*All My Deceased
School Friends
Margaret Haberlin*
*Emilia Aceena
Eloisa Thompson*
*Diane Ames
Nano & Doug Little*
*Mark Ashleman
Judith Ashleman*
*Mr. & Mrs. James Bolan
Virginia Bolan*
*Ann M. Brennan
Patricia B. McCarthy*
*Sr. Mary Busch, RSCJ
Terry Brown Moyer*
*Carol Campbell, RSCJ
Mary Ellen O'Keefe*
*Sr. Kit Collins
Diana B. Monro*
*Sr. Lilian Conaghan
Michele Malloy*
*Dorothea Cunningham
Cynthia Whalen*
*Cliff Fisher-Bachle
Andrea B. Fisher*
*Ed & Emma De Sano
Kathryn Mahoney*
*Elsie & Thomas Deeley
Donna Deeley*
*Sr. Jan Dunn
Deborah N. Dunham
Beth Speck*
*Kathleen "Kit" Flynn-Dyer
Fran Scholl*
*Dr. Marie-Therese Gehin
Carol Rigolot*
*Sally Hays -NCDS'79
Susan Hays*

*Peter W. Herman
Alice Herman*

*Eileen Krakora
Susan Krakora*

*Amanda Bricker Leppin
Mary Bricker-Jenkins*

*Marie (Molly) Logsdon
Katherine Logsdon
McCracken*

*Jean McGowan MacDonald
Trish Ellingwood*

*Catherine McShane, RSCJ
Herlinda Belcher*

*Sr. Catherine Maguire, RSCJ
Deborah J. Donovan*

*Mother Anna Marheineke,
RSCJ
Melanie Goudelocke*

*Mr. & Mrs. Edward
H. Ohlms
Sharon L. Ohlms*

*Asele Raurell
Maria Diaz*

*Sr. Anne Ryan
Molly Schaaf*

*Helen Ryan
Mary Carroll*

*Luis Sanchez
Eloisa Thompson*

*Mary Noel Adams Saunders
Marguerite L. Adams &
Thomas K. Foutz Fund*

*Patricia Balducci Sheridan
Michael Sheridan*

*Marie B. Daniels Straw
Dr. Anne Severs*

*Mere Paul Yon
Monica Williams*

In Tribute to / Honor of

*CSH Broadway
Class of 1964
Michelle O'Neal*

*Sr. Laura Ann Caire
Michele Malloy*

*Margaret Canty, RSCJ
Sandra Shargabian*

*Sibby Charbonnet
Yvonne Gwin*

*Kathy Dolan, RSCJ
Trish Ellingwood*

*Mary Elizabeth Fisher
Carol R. Exley*

*Mary Ellen Broadhead
Glaser Dorothea Margiotta*

*Mrs. Britt Glomset
Sr. Bunny Flick, RSCJ*

*Sheila Hammond, RSCJ
Trish Ellingwood*

*Sally Teppert McKendry
Elizabeth Jachman*

*Rhonda Raffi Meegan
Kryisia Miller*

*Shirley Miller, RSCJ
Susan Krakora*

*Sr. Patricia Munch, RSCJ
Christine Cassedy*

*Mr. & Mrs. Edward Ohlms
Sharon Ohlms*

ENDOWMENTS

*The following people
gave generously to the
endowment to support
the National Office:*

*Betty Brock
Mary Farrell
Catherine Fitch
Jo Ann Holland
Brooke Janis*



Sacred Heart Legacy Society

AASH recognizes members of the AASH Legacy Society in the annual report published every September in the *Esprit de Coeur* magazine. With the member's permission, we will run a photo and brief bio in the *Esprit* and publicly thank them when the gift is first planned. In the following years, they will be noted in a special list of AASH Legacy Society members in the annual report. A complete profile/obituary along with photos will be run in the *Esprit* and posted on AASH's social media when we receive the gift. Legacy Society members should feel free to send high resolution photos they would like to be included in the magazine.



Did you know you can give money to AASH and lower your adjusted gross income (AGI) at the same time? Anyone aged 70½ or older who must take required minimum distributions (RMDs)

from their traditional IRAs can contribute up to \$100,000 directly to AASH without it being considered a taxable distribution. Contact your IRA administrator or the National Office (nationaloffice@aash.org) for more information.



Statue on the grounds at AASH- St. Charles



AASH Connections

AASH Connections (www.aash.org/connections) is the place for Sacred Heart alums to find the things they need, including products, services, employment opportunity internships, mentors, contacts in a new city, vacation rentals, assistance in a foreign country – or anything else you can think of!

These resources are offered to Sacred Heart alums by Sacred Heart alums. To access the list, you must be logged into your AASH account.

Log in here: <https://aash.org/directory>. If you are logging in for the first time, use your first and last names without a space as your username (FirstLast) and set a new password. If you do not have an account, contact the National Office (nationaloffice@aash.org) for a temporary password.

Our current range of listings include investment advisors, vineyards, realtors, vacation rentals and alums willing to be points of contact in various cities. The website is set up in a style similar to Craigslist; please add your listed www.aash.org/connections. Please don't forget to add a contact method, along with any photos, prices or other income that you would like to include. Offering discounts is not required and there is no cost to post your listing. Remember, users must log in via the aash.org website so only Sacred Heart alums will be able to access AASH Connections.



AASH National Office
801 South Spoeede Road, 2nd Floor
St. Louis, MO 63131

Nonprofit U.S.
Postage
PAID
MLP

Esprit de Coeur is published biannually
by the Associated Alumnae and Alumni
of the Sacred Heart for all alumnae/i of Sacred
Heart Schools in the U.S. and Western Canada.

To report a change of address or if you prefer
to receive *Esprit de Coeur* electronically,
please contact the National Office at [nationaloffice@
aash.org](mailto:nationaloffice@aash.org) or 314-569-3948.

www.aash.org



The Associated Alumnae and Alumni of the Sacred Heart (AASH) was created in 1930, as a way to unite all children of the Sacred Heart and to further the work of the Religious of the Society of the Sacred Heart.