

Esprit de Coeur

spirit of the heart

FALL 2015

2014 - 2015
ANNUAL REPORT
HONOR ROLL OF DONORS
AND FINANCIALS



ASSOCIATED ALUMNAE AND ALUMNI OF THE SACRED HEART



WHAT'S INSIDE

National Office News

2015-17 AASH Board

Sharing *The Legacy Project*

Boston Conference Highlights

Young Alum Spotlight

Berchmans Graduates First Class

Nourishing our Spirit

Top Shelf

Dear Sacred Heart Family and Friends,

While our Conference in Boston was a celebration of Cor Unum, it was also the gift of many dedicated alums who gave their time and effort to ensure that our experience was unique and memorable. My deepest thanks and applause go to the conference planning committee chaired by Toni Curry and Rosemary Dwyer. They provided a thoughtful balance between the flavor of Boston and the business of meetings and presentations. This will be a hard act to follow, but the Western Region is up to the challenge. It is with great pleasure and excitement that I invite you to the 2017 National Conference in San Francisco. The Sir Francis Drake Hotel will host our meeting from April 27-30, 2017. Little cable cars promise to take you “halfway to the stars.”

In accepting the presidency of AASH, I promised that the 2015-17 Board would be diligent in its efforts to translate our Association’s mission statement into meaningful and relevant goals for this biennium. When the Board met in St. Charles in June, we engaged in a visioning process that considered what AASH might look like in 20 years. Needless to say, the possibilities of future technology inspired the Board to think at its creative best. The AASH Board has committed itself to four goals for the present. They are seen as a bridge to the future and are focused on serving the needs of our membership. Like the Goals and Criteria in Network schools, our goals will also be defined by specific criteria providing the means to success.

WORKING TOGETHER TO REMAIN AS ONE IN THE HEART

- ✦ We will develop a clear and relatable message of our mission and purpose for our members so that they may understand and share the benefits of AASH.
- ✦ We will enhance our existing platform to support professional and personal networking amongst our members.
- ✦ We will serve our members by focusing on more direct contact with our associations.
- ✦ We will ensure the sustainability of AASH by strengthening our endowment through more deliberate communication so that members may understand our needs.

One of the high points of the Boston Conference was the screening of the AASH-produced video *The Legacy Project*. Several alumnae were video interviewed during the AMASC Congress in Scottsdale in November 2014. The interviews included reminiscences about Sacred Heart education as well as aspirations for the present and future of our schools and AASH. Several individuals have urged us to make the video available for personal use. We are in the process of making the video available on YouTube to provide free access viewing. If you wish a DVD copy, AASH can make one available to you. While we are not charging a fee for the DVD, we are requesting a donation to defray handling and shipping costs and to support the continued development of the Project.

As part of the bicentennial observance of St. Philippine’s initiating global Sacred Heart education in 1818, AASH will develop a second video.



Mary L. Forsyth, President

This will include interviews not only with alums, but students, teachers, parents, trustees and others who are part of the Sacred Heart family. Rosalie Posselius who produced the first video will continue working on the Project. We are grateful to her for her talents and generosity in creating this archival legacy for us and for future generations. The RSCJ of the U.S./Canada Province saw the video at their Assembly in July. Their applause, laughter and sighs of recognition confirm that *The Legacy Project* is a hit!

It is with great pride that AASH introduces you to our new National Office Director, Karen Timmons. Karen is an alumna of the Academy in St. Charles and she has a long family history at the school. She brings many skills to our office and we were blessed that she would join our crew as Maggie Kaspura has moved on to new career directions.

In this issue of *Esprit*, Editor Lisa Tebbe has endeavored to provide a rich and diverse selection of readings. Included is our annual report listing the names of our many benefactors. Please know that AASH deeply appreciates your gifts of treasure as well as your prayers. As autumn is upon us and associations resume their meetings, we wish you every best in our combined mission to serve the alumnae and alumni of the Sacred Heart.

In One Heart,
Mary Lococo Forsyth
El Cajon '63, Lone Mt., San Francisco '67

2015-2017 BOARD MEMBERS

U.S. Provincial, Society of the Sacred Heart, Honorary President
Barbara Dawson, RSCJ
bdawson@rscj.org

President

Mary Lococo Forsyth
El Cajon 1963
Lone Mountain, San Francisco 1967
President@aashnet.org

Vice President

Jodie Hannaman Thorne
Duchesne—Houston 1985
VicePresident@aashnet.org

Treasurer

Diane Remien Tymick
Lone Mountain, San Francisco 1968
Treasurer@aashnet.org

Corresponding Secretary

Kathleen Feeney
Greenwich/Maplehurst 1998
Social@aashnet.org

Recording Secretary

Caitie O'Shea
Lone Mountain, San Francisco 1967
RecordingSecretary@aashnet.org

Central Regional Director
Shannon Gilroy
Duchesne—Omaha 2002
CentralRegionalDirector@aashnet.org

Eastern Regional Director

Rhonda Raffi Meegan
Newton Country Day 1971/
Newton College 1975
EasternRegionalDirector@aashnet.org

Southern Regional Director

Deborah Newhouse Dunham
Grand Coteau/
Duchesne—Houston 1970
SouthernRegionalDirector@aashnet.org

Western Regional Director

Kate Devers Sawyer
91st Street, New York 1986
WesternRegionalDirector@aashnet.org

National Office Director, ex-officio

Karen Netsch Timmons
Academy of the Sacred Heart,
St. Charles 1982
NationalOffice@aashnet.org

AASH National Office
801 South Spodee Road
St. Louis, MO. 63131-2699
314-569-3948
www.aashnet.org

In an effort to decrease our publication and mailing costs and to reduce the amount of paper we use for each issue, *Esprit de Coeur* is being mailed to alums who graduated prior to 1978. Those who have graduated since 1978 will receive electronically. *Esprit de Coeur* is also available on our website aashnet.org. If you wish to receive a hard copy by mail or if you are receiving a hard copy and prefer to receive electronically, please contact the National Office.



On the cover: Top row: Academy of the Sacred Heart, Bloomfield Hills Class of 2015 celebrates Prize Day; Griffin Lee (Sacred Heart Prep, Atherton '13) gives his sister Moi (Katherine) Lee her alumni pin; the graduating class of the Academy of the Sacred Heart, St. Charles; the National Conference Committee planned an inspirational and informative gathering in Boston.

Back cover: Detail of Sacred Heart stained glass window in the chapel at Newton Country Day School; Cor Unum awardees, Esther Mariassy Kmetty, Mimi O'Hagan, Karen Witt German and Laurie Weiss Nuell gather with Woman of Conscience recipient Gail O'Donnell, RSCJ (center) at St. Cecilia's Church in Boston.



Welcome to our 2015-17 AASH Board!

Front row: left to right: Shannon Gilroy, Mary Forsyth, Rhonda Meegan, Jodie Thorne; Back row: Diane Tymick, Kathleen Feeney, Kate Sawyer, Caitie O'Shea

Editor: Lisa Tebbe, St. Charles '80, editor@aashnet.org
Designer: Angela Schulte

Our thanks to the following for the use of their images:
Mary Lou Cochran, Linda Duffy, Heather Hargrave,
Michael Jacob, Steve Leetch, Joan Runge, Able Sanchez/
Golden Images, Caitlin Taylor

NATIONAL OFFICE NEWS

As a new Board came together in June, AASH also welcomed Karen Netsch Timmons as National Office Director. Karen has deep roots in Sacred Heart education. She is an alumna of St. Charles '82 and generations of her family are alums as well. (It is even her family's clothing business, Thro's, that is the boys' uniform supplier at the Academy).

Karen attended the University of Missouri – Columbia where she received her bachelor's degree in Journalism and she holds an MBA with a concentration in marketing and business strategy from the University of Chicago Graduate School of Business. Her career in marketing and public relations includes Leo Burnett, Kraft Foods, Inc., and Twentieth Century Fox and spans Chicago, London and Los Angeles.

When she and her husband, Bill, returned to the Midwest in 2011, they were excited to enroll their children, Jade (now 8th Class) and Will (4th) in her alma mater. Karen quickly became involved as a parent volunteer, then accepted the position of special events coordinator, where she honed her marketing, fundraising, event planning and volunteer management skills. Just prior to joining AASH, Karen was the associate director of fundraising for the American Diabetes Association, a cause that she is dedicated to as her son was diagnosed with Type I diabetes as a toddler, and her daughter was recently diagnosed.

Karen learned about the AASH National Office Director position from Maggie Sieger Kaspura, who served as National Office Director since 2011 and was leaving AASH to return to her career in journalism (see page 5).

"I am excited to be working for such a special organization that is so close to my heart and deeply ingrained in my family history," says Karen. "It's hard to put into words...the traditions, the community, the goals, the education that are unique to a Sacred Heart education. I feel so blessed to be a part of continuing to build that community and connection among alumni and alumnae across the country."

As National Office Director, Karen works to keep our more than 40,000 alums connected. From her office nestled behind the Chapel at Villa Duchesne, she maintains alumnae/i records, raises funds for annual giving and the



Karen Netsch Timmons, National Office Director, St. Charles '82

endowment, collaborates with the RSCJ Provincial Team and Network of Sacred Heart Schools and fosters communication.

"When you meet Karen Timmons, you're meeting a woman of wit and wisdom," says AASH President Mary Forsyth. "She brings to our National Office extraordinary experience in leadership, management and fundraising. Her family's Sacred Heart history goes back to the time of St. Philippine's presence at the Academy in St. Charles. With her children presently attending the same academy (#41 and #42 in the family!), Karen has a natural interest in the young women and men who will make up our future alumnae and alumni. We are blessed to have her as our new National Office Director."

Karen would love to hear from our Sacred Heart alums and can be reached at 314-569-3948 or NationalOffice@aashnet.org.

Connect with Us

We all know the tune "It's a Small World," but when you're a Sacred Heart alum, it's even smaller! We hear dozens of stories of how alums recognize each other by their class rings, or randomly meet at work or on college campuses. The opportunities for connection are endless and we want our alums to benefit from them.

Whether you move to a new city, head off to college or need to network for a new job, it helps to know that you instantly have something in common. The Sacred Heart Alum Network is more than 40,000 members strong and can help you find others.

Not sure we have your latest email address?
Contact us at NationalOffice@aashnet.org or call 314-569-3948.

We'd love to hear how you met other Sacred Heart alums. To share your Small Sacred Heart World Story, email editor@aashnet.org.

Visit our website aashnet.org and connect with us on Facebook (AASH-Associated Alumnae and Alumni of the Sacred Heart), Twitter (@AASH) and LinkedIn (AASH-Associated Alumnae and Alumni of the Sacred Heart).



Maggie Sieger Kaspura served behind the scenes for three-and-a-half years as National Office Director, spanning two Board terms and National Conferences in Omaha (2013) and Boston (2015). Her accommodating attitude, warm and cheerful personality and easygoing nature were gifts as she worked to enhance, streamline and publicize the services offered by the AASH National Office.

"Maggie arrived on the doorstep of the AASH National Office at precisely the right time in 2011," says Alice Burns, past president of AASH. "She smiled her ever-so-bright smile and with her can-do attitude stepped right in and began to learn the ropes. AASH is grateful to Maggie for the years she served as National Office Director, always focusing on what might be best for the alumnae/i and exploring new, innovative approaches."

A 1985 graduate of Duchesne Academy – Houston, Maggie went on to Notre Dame where she earned a bachelor's degree in American Studies. She spent several years as a correspondent for *Time*, and was also published by Reuters, the *Chicago Tribune*, *Entertainment Weekly*, *Realtor Magazine* and *Readers Digest*, as well as others. Somehow, Maggie also found time to pen Duchesne's 50-year history, *Deep in the Heart*.

When Maggie and her husband, Ian, moved to St. Louis from Grand Rapids, Mich., she knew that she wanted their daughter, Molly, to attend Philippine's first school in St. Charles. Molly, now in Sixth Class, will graduate in 2018, when the Academy will celebrate its Bicentennial.

Last winter, Maggie was recruited by Fleishman-Hillard, a public relations firm based in St. Louis, and was offered a position as a freelance writer. She now edits their online magazine, *True*.

While she has left the AASH office, she has made many friendships and looks forward to attending (not working!) the National Conference in San Francisco in 2017. "My time with AASH was truly remarkable. I'm confident the talented new board and National Office Director are going to do great things," says Maggie. "The organization is filled with amazing women and men, and I feel privileged that many will be my lifelong friends."

For Maggie's sincere, heartfelt efforts for Sacred Heart alums, we say Très Bien and Merci Beaucoup!

REGIONAL NEWS AND MEETINGS

Every other year (opposite of the National Conference), Sacred Heart alums are invited to gather in each of our four regions — Central, Eastern, Southern and Western — to connect and collaborate with each other. Stay tuned for dates and details and plan to attend a 2016 Regional Meeting with friends!

CENTRAL REGION ASSOCIATIONS

Regional Conference TBD.

Sheridan Road Alumnae/i Association, Chicago, Ill. • Barat College Alumni Association, Lake Forest, Ill. • Woodlands Academy Alumnae Association, Lake Forest, Ill. • Alumnae/i Association of the Academy of the Sacred Heart, Bloomfield Hills, Mich. • Academy Alumni Association, Grosse Pointe, Mich. • Kansas City Alumnae/i of the Sacred Heart (in formation), Kansas City, Mo. • Alumnae of the Sacred Heart, St. Joseph, Missouri • Alumnae Association of Duchesne College and Academy of the Sacred Heart, Omaha, Neb. • Alumnae of the Sacred Heart – Clifton – Cincinnati • Cincinnati, Ohio • Northeastern Ohio Alumnae/i of the Sacred Heart, Cleveland, Ohio • Milwaukee Alumnae of the Sacred Heart

EASTERN REGION ASSOCIATIONS

It was exciting to welcome our newest alumni association, the Greater D.C. Area Alumni, to the Eastern Region this past April at the Boston Conference! Regional Conference TBD.

Greater D.C. Area Alumni • Greenwich – Maplehurst Alumnae Association, Greenwich, Conn. • Stone Ridge Alumnae Association, Bethesda, Md. • Newton Country Day Alumnae of the Sacred Heart, Boston, Mass. • Newton College of the Sacred Heart Alumnae,

Boston, Mass. • Southeast Massachusetts, Cape Cod & the Islands Alumnae/i Association, Southeastern Mass. • Stuart Alumnae Association, Princeton, N.J. • Capitol Area Alumni Association (in formation), Albany, N.Y. • Alumnae Association of the Convent of the Sacred Heart 91st Street, New York, N.Y. • Manhattanville Alumni Association, Purchase, N.Y. • Rochester Alumnae Association of the Sacred Heart, Rochester, N.Y. • Overbrook-Bryn Mawr-Eden Hall Alumnae Association, Philadelphia, Penn. • Elmhurst Alumnae Association, Providence, R.I.

SOUTHERN REGION ASSOCIATIONS

Regional Conference hosted by Villa Duchesne-City House, fall 2016, date TBD.

Gold Coast Alumnae Association of Southern Florida, Boca Raton, Fla. • Sacred Heart Cuban Association, Miami, Fla. • Sacred Heart Alumnae Association at Carrollton, Miami, Fla. • Southwest Florida AASH, Naples, Fla. • Tampa Bay (West Coast) Alumnae of the Sacred Heart • Treasure Coast Associated Alumnae of the Sacred Heart, Vero Beach, Fla. • Atlanta Alumnae of the Sacred Heart • Grand Coteau Academy of the Sacred Heart Alumnae Association • Rosary Sacred Heart Alumnae, New Orleans, La. • St. Charles Alumni Association of the Sacred Heart • Oak Hill-Barat Hall Alumni Association, St. Louis,

Mo. • Maryville University Alumni Association, St. Louis, Mo. • Villa Duchesne-City House Alumnae Association, St. Louis, Mo. • Raleigh-Durham-Chapel Hill Metropolitan Area Alumnae Association • Dallas/Fort Worth (in formation) • Duchesne Alumnae Association – Houston • Alumnae of the Sacred Heart, San Antonio, Texas

WESTERN REGION ASSOCIATIONS

Regional Conference hosted by San Diego chapter, October 21-23, 2016.

Arizona Associated Alumnae of the Sacred Heart • Atherton Alumni of the Sacred Heart • Associated Alumnae/i of the Sacred Heart of Los Angeles • Associated Alumnae of the Sacred Heart of Orange County • Alumnae of the Sacred Heart San Francisco • Broadway Alumnae of the Sacred Heart, San Francisco, Calif. • Stuart Hall Alumni Council, San Francisco, Calif. • San Diego Sacred Heart Alumnae Association • Colorado Alumnae of the Sacred Heart, Denver, Co. • Alumnae/i of the Sacred Heart, Las Vegas, Nev. (in formation) • Alumnae of Forest Ridge School of the Sacred Heart, Seattle, Wash. • Wyoming AASH • Vancouver Alumnae Association, British Columbia, Canada

OUR SACRED HEART STORY — Sharing *The Legacy Project*

An Interview with Roselie Posselius, Creator

At the National Conference in Boston last spring, alums were treated to a screening of a video documentary, *The Legacy Project*. From heartfelt memories to hilarious stories to unforgettable Religious, with smiles, laughter and tears, the film received a resounding *très bien* from the audience.

The concept evolved as a vehicle to capture and preserve the feelings and impressions of Sacred Heart women and men, young and old. It is intended to be a dynamic, growing archive of how our alumnae and alumni interpret and live the legacy of their Sacred Heart education. Roselie Bellanca Posselius, past Central Regional Director, and 1973 alumna of Grosse Pointe and '77 of Bloomfield Hills/Lawrence Ave., stepped up to spearhead the project. Along with her videographer, Roselie began the video “conversations” at the AMASC Congress last fall in Scottsdale, Ariz. The collection of interviews continues and will be available on YouTube soon.

We had a chance to chat with Roselie who gives us a behind the scenes look.

EdeC:

How did you become interested in film making?

RP: My experience in video came as a natural progression from my work in theatre production. I have been producing theatre for over 20 years and had the opportunity to translate some of that work into film. It was a medium in which I could utilize my experience but still learn new ways to communicate. That initial interest resulted in my partner, J.C. Whitelaw, and me starting a video production company about five years ago.



The scene is set and the cameras and lights are in place for the interviews.

What interests me most and consistently is telling a story. The nuances of the mediums that one can use fascinate me. And, there are an infinite amount of stories to tell.

EdeC:

Can you tell us how this concept came to be?

RP: The idea of *The Legacy Project* was born out of a perfect storm of events. I had been working for several years in film when I became a member of the AASH Board. I had also been working on the archives of Sacred Heart in Grosse Pointe for many years. When the discussion of AASH archives was brought up at our first Board meeting in St. Charles by Mary (Forsyth), I believe we all felt that we had found a worthy project that we, as a Board, could adopt. I was lucky enough to be there and had the ability to contribute.

It reminded me of Paulo Coelho's quote: “When you want something, the whole world conspires in helping you achieve it.”

EdeC:

*How did you envision the purpose of *The Legacy Project*?*

RP: To me the story of the Sacred Heart is an important part of history. It has remained relevant in countless ways. Our founders were brilliant, brave women of faith and strength. Their mission has inspired so many. What better way to tell that story than through the people who have had the experience, those who have lived it – the alumnae and alumni. We are the product of the mission. We are the beneficiaries and with that comes the responsibility to carry on that mission.

I had been researching St. Madeleine Sophie for a speech I was asked to make for graduation at the school in Grosse Pointe and came across a quote from her that really made an impression on me:



Roselie Bellanca Posselius, Grosse Pointe, '73, Bloomfield Hills/Lawrence Ave. '77

"We must know how to inspire in our pupils a passion for the beautiful. Let us put history into their souls; without that, memories will fade and we shall have wasted our time."

I felt then that ours is a story that must be told.

EdeC:

What is your process for creating?

RP: The interviews are clearly the basis for the process. The AASH Board created a set of questions and we began there. My video partner and I went to Arizona for AMASC and began filming. While asking the questions of each individual, themes began to emerge. There was also unique content with each alumna. It wasn't difficult to tell which direction to take once we started talking.

The most difficult part of the process was editing the huge amount of information. It always is. We had about 30 interviews and it took hundreds of hours to distill it down to the introductory video that we created. There were so many important messages and experiences that came throughout the interviewing process that could have been included. But, after a while, the pieces fit together like a puzzle. It helped knowing that all of the interviews would be saved in the archives and would remain available for all to examine forever. Our job was just to give a sample of what we had hoped to accomplish.

EdeC:

It must have been so gratifying to experience the reaction from viewers. Can you describe?

RP: The reaction to the film has been great. Whenever you produce something like this, you become so close to it that you are not necessarily a good judge of whether or not it will translate from your vision to the audience's perspective. It wasn't really until the luncheon at the Boston Conference where we presented it that we knew we had told the story in an effective way. What a relief! Since then I have had a lot of people share their reactions with me and I am grateful and inspired to keep it going.

EdeC:

Having created something of such great significance, what are your hopes for it?



Olga Rome, AASH Past President and Past President of AMASC, is interviewed for The Legacy Project.



Archive photo, Grosse Pointe



Archive photo, Field Day 1890, Grosse Pointe

RP: The truth is that *The Legacy Project* will preserve our memories, our traditions, our collective and individual stories for the future. It provides insight into the evolution of the Sacred Heart and its mission.

I hope that *The Legacy Project* serves as a means to tell the story of the Sacred Heart. I hope that people will learn the value of our history, the lessons of our founders and the necessity for this type of education to continue and flourish. I hope it serves to inspire our students, their families and the faculty that teach in our schools. I hope it clarifies our purpose and the significance of the living mission of the Sacred Heart now and into the future.

EdeC:

Thank you, Rosalie, for helping to share our Sacred Heart story. We are deeply grateful for your time and talent and for helping to connect our alums across generations!

Would you like to leave a legacy?

AASH hopes some of our readers will consider a legacy gift to AASH in their wills to help continue our mission "to foster a spirit of unity and ongoing communication among alumnae and alumni and their respective associations throughout this nation and the world." For more information, please contact the AASH National Office at 314-569-3948.

BOSTON CONFERENCE HIGHLIGHTS



40th Biennial National Conference

More than 200 alums gathered in Boston April 9-12 to connect, collaborate and renew their Sacred Heart spirit. Conference Co-chairs Toni Walsh Curry and Rosemary Stuart Dwyer worked tirelessly to provide a conference that nourished the mind and spirit, as well as, in true Sacred Heart style, the appetite – not just for food, but for friendship.

Speakers shared their experiences with “Philanthropy from the Heart,” that informed and inspired attendees. As always, one of the highlights is a visit to the local Sacred Heart school and experiencing local flavor. Attendees spent their first afternoon at Newton Country Day School, where they were welcomed by Barbara Rogers, RSCJ, Head of School, and were treated to a performance by their choir as well as a reflection on the iconography of the chapel.

From discussions on climate change and outreach to the marginalized, to liturgical celebrations, including the beautiful Cor Unum Liturgy held at St. Cecilia Church, to the beloved home dinners, attendees shared their Sacred Heart spirit and gifts of Philanthropy from the Heart.



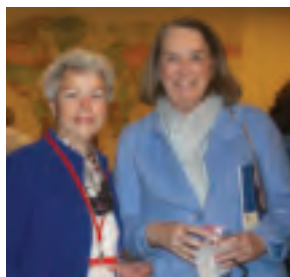
Keynote speaker Rita Foley, Newton Country Day '71, a retired Fortune 500 global president, is founding partner of Reboot Partners LLC. She shared how giving back is critical to one's health, feeling relevant, being fulfilled and living a life of gratitude.



Kathleen Feeney, Michael Anne Cullen and Shannon Gilroy enjoy the evening cruise.



AASH Past Presidents, front row, left to right: Marion Glennon, Alice Burns, Maureen Ryan. Middle row: Beth Lowry Speck, Barbara Brown Lopiccolo, Marcie Eason Amory, Adele O'Grady Botticelli. Back row: Valerie Moore O'Keeffe and Toni Walsh Curry.



Julie Burns Doll and Pat Daly Verde



Melissa Weiksna (Nottingham, Buffalo, Newton College) spoke about addiction as part of the Outreach to the Marginalized session. Her daughter Amy Caruso died of a heroin overdose in 2009. She shares Amy's journals in "Heroin's Puppet."



Cor Unum Award recipient Karen Witt German and her sister, Marilyn Witt Tampke, Duchesne Omaha alumnae.

CALLS TO ACTION

At each Biennial Conference, members gather by region to share ideas, begin planning for a Regional Conference and draft a Call to Action. The Calls to Action embrace the conference theme and reflect the hopes for each region.



Eastern Region

Whereby each year on the Feast of the Sacred Heart, each alumna/us performs an act of kindness for another person. This will be a gift of one from the heart.

Western Region

The Western Region will take a simple step each day to Go Green in the Golden West, beginning with making a strong commitment to create a GREEN Conference in 2017.

Southern Region

Each member of AASH, in the spirit of "Philanthropy from the Heart," will commit to a daily, intentional act of kindness.

Central Region

In the spirit of Philanthropy from the Heart, each association will make a commitment to educate and connect current students, alumnae/i and past parents with AASH through service and prayer.



The choir at Newton Country Day welcomed conference attendees in the Chapel. The image on the left depicts St. Philippine Duchesne as Quah-kah-kanum-ad, as she was called by the Potawatami, or "Woman who prays always."



The dinner cruise aboard the Odyssey provided a one-of-a-kind experience of Boston and time to reconnect with friends.



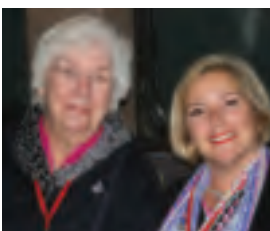
AASH President Alice Burns, past National Office Director Jeanne Burke O'Fallon and Mary Jane Tiernan.



Friend of the AASH, Rev. E. Corbett Walsh, S.J. con-celebrated the Cor Unum liturgy at St. Cecilia's Church. Sadly, as this issue was going to press, we learned of his death. Our thoughts and prayers are with his family.



Maureen Elliott, on behalf of the Canadian alumnae contingent, acknowledges her dear friend Shelagh Mary O'Dwyer, whose generous legacy gift to the AASH stipulated that part was to be used to underwrite the opening cocktail party at each National Conference.



Lucie Nordmann, RSCJ and Linzee Evans LaGrange from Grand Coteau, La.

CONFERENCE HIGHLIGHTS, *continued*



Barbara Gould Henry, Newton College, eloquently shared her personal and moving story of teaching Ruby Bridges in New Orleans in 1960 as desegregation was ending. Her powerful and poignant words held the audience captive. "As I took her hand in mine from the hand of the Federal Marshal, we made our way — then — and forever through the year — alone and together — for our singular mission and loving, personal academic adventure."



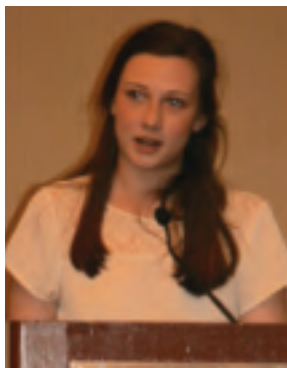
Cor Unum recipients are recognized for their loyalty to Sacred Heart values and the gift of self in service to others. Front row, from left to right: Mimi O'Hagan, Patricia Boyd Fullmer, Rosemary Stuart Dwyer. Middle row: Toni Walsh Curry, Barbara Brown Lopiccolo, Marcie Eason Amory, Betty Rexford Buckland and Jean Hicks Miller. Back row: Esther Mariassy Kmetty, Patricia Eldredge Kolojeski, Valerie Moore O'Keeffe, Angel Kraemer Kleinbub and Jane Shannon Cannon.



Irish dancers were a surprise hit at the Cor Unum Celebration Gala.



Joan Kirby, RSCJ, spoke about climate change as part of a panel moderated by Frances Dubrowski (Newton College), project director of Honoring our Future. Sister Kirby passed away in September. She was director of the Temple of Understanding and was a representative to the United Nations. In 2010 she received the Interfaith Visionary Lifetime Achievement Award.



Teresa Haney, Duchesne—Houston, shares her winning entry for the Jeanne Burke O'Fallon Essay Contest.

To read her essay, visit: aashnet.org/news



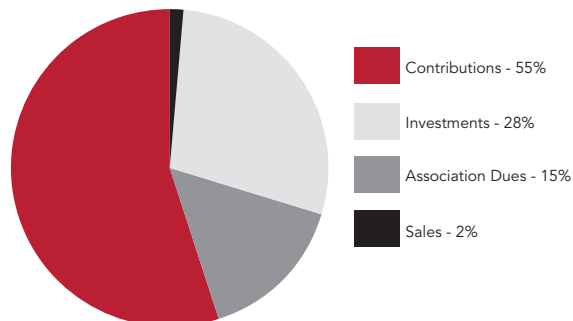
Cristina Mas, Carrollton School of the Sacred Heart '05, receives the Maryliz deVito Lincoln Generosity and Service Award from Alice Burns. This award is presented to an alumna/us, 35 or younger, who has demonstrated outstanding support of and loyalty to her/his alumnae/i association.

ANNUAL REPORT

Reflects gifts received June 1, 2014 — May 31, 2015

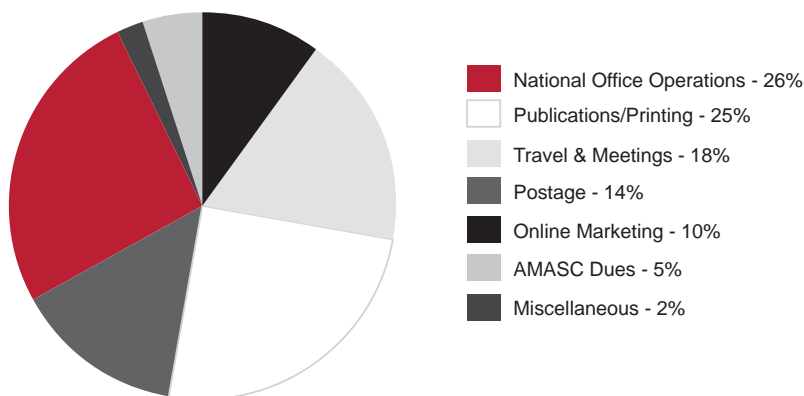
AASH SOURCES OF FUNDS

Contributions.....	\$106,055.89
Investments (Transfer from Endowment)....	\$55,000.00
Association Dues.....	\$29,604.00
Sales	\$2,946.00
Total.....	\$193,605.89



AASH USES OF FUNDS

National Office Operations	\$48,212.59
Publications/Printing.....	\$45,848.00
Travel & Meetings.....	\$32,143.95
Postage.....	\$25,079.28
Online Marketing.....	\$18,980.00
AMASC Dues.....	\$10,000.00
Misc	\$3,242.86
TOTAL.....	\$183,506.68
Net Income	\$10,099.21



HONOR ROLL OF DONORS

A heartfelt thank you to our nearly 800 generous donors! Our annual appeal reached \$106,055.89 to benefit AASH. This list reflects donations received from June 1, 2014 — May 31, 2015.

SERAPHIM

**\$10,000 to
\$50,000**

Estate of Mary Kay
Tracy Farley

ARCHANGELS

**\$5,000 to
\$9,999**

Rosemary O'Neil

ANGELS

**\$1,000 to
\$4,999**

Anonymous
Peggy Badenhause
Teddy Ebersol's
Family Foundation

Kathleen Gibbons Favrot
Jean Madden Glunz
Mary McNerney Gunther
Muriel M. Harris
Denise McCarthy Hattler
Suzanne Jehle
Anne Mahony Johnson
Theodore Kienstra Jr.
Rhonda Raffi Meegan*

MADELEINES \$500 to \$999

Nancy Agnew
Nancy M. Bowdring
Mary Lou Clemons
Betty Jane Finnerty
Marcia Floyd
Bonnie Graham

Barbara Hugenberg
Elaine M. Martin
Carolyn McGrath
Rowena Naidl
Eugenie O'Hagan
Gwen Larke Pike
Janet McInerney Sargent
Janet N. Siler
Therese Sweeney
Ann M. Trivisonno
Diane Remien Tymick
Marie Wilson

PHILIPPINES \$250 to \$499

Joan Alders
Melanie Bartels
Janet Burke

Regina Callagy Burke
Patricia M. Colbert
Judith Conley
Pamela D'Ambrosio
Leonore Daschbach
Mary Dickinson
Francesca Digirolamo
Allison Cryor DiNardo
Diane Donovan
Anne M. Doyle
Lily Trout Duggan
Elizabeth Floberg
Mary L. Forsyth*
Carol Fraser
Dianne Gonzalez
Margaret E.
Grossenbacher
Ellen M. Harrington

Susan Hays
Trudy Kelly
Mr. & Mrs. Charles Kouri
Elizabeth Mathias Kozak
Linda A. McBain
Elizabeth J. McCormack
Maria J. McDonald
Mary Elizabeth McGarry
Mary Helen Meade
Sharon Marie Meyerkamp
Judith B. Mullen
Jane Burke O'Connell
Jeanne Burke O'Fallon
Kathleen "Caitie" O'Shea*
Marjorie Davis Parkison
Carolyn Lindeman Price
Corinne Roberts
Donna Rohne

HONOR ROLL, *continued*

Allison K. Ryder
Frances Salvi
Margaret Craig Sheehy
Beth Lowry Speck *
Victoria G. Sullivan
Jodie Hannaman Thorne *
Mary Thompson
Anne-Marie Walker
Donna M. Walker
Helen Green Young

CHERUBS \$100 to \$249

AASH - Atherton
Marcia Abbo
Maureen Aggeler
Susan Jantorni Allen
Elaine Amy
Mary Ashe
Sarah Jean Avery
Frances Bailey
Anne Baker
Carolyn Balducci
Dorothy Battelle
Judith S. Bauer
Tissie Bean
Mr. & Mrs. Scott Bearse
Michaela Belatti
Marilyn A. Belt
Alice M. Berdan
Jane McNamara Bieber
Barbara Bluestone
Mr. & Mrs. David Blume
Sarah Blume
Andrea K. Boehmer
I. Marie Bone
Megan Boschini
Sherrill Bounnell
Catherine Brady
Frances Breau
Katharine Broderick
Eleanor Brown
Elizabeth Buckland
Delia Burke
Alice J. Burns*
Mary Burns
Peter S. Burns
Susan Burns
Vinita Burns
John F. Burns II
Teresa Cabrinha
Veronica Campbell

Jane Cannon
Cornelia Carroll
Faith Casey
Patricia Casper
Victoria A. Chuck
Donna Cianelli
Robert Ciapciak
Nanette Circo
Sheilah Cloud
RoseMary Mele Coleman
Deanne Colligan
Graciela Rojas Conley
Mary Connelly
Katharine Wilson Conroy
Kimberly J. Conway
Barbara Ann Cook
Mary Faith C. Cook
Christopher J. Corkery
Dorothy Coughlin
Barbara Coy
Dorothy Cuono
Cathleen M. Curl
Toni Curry
Louise Dagit
E. Berenice Davis
Mary Jo Dawson
Lenore M. De Csepel
Brenda De Silva
Joan Decker
Donna E. Deeley
Gloria Delgado
Mary Rose Desloge
Julie Doll
Constance Donius
Emilie Dressler
Florence H. Druckenbrod
Caroline Murrin Dulle
Mary Ellen Eagan
Karen Edmunds
Claudette Eggert
Kathleen Egloff
Marion Eigenbrod
Susan C. Engel
Michaela Kelly English
Elizabeth Marie Fahey
Diane M. Falk
Kathleen A. Feeney
Catherine Felleman
Martha Finney
Andrea Fisher
Barbara Maniscalco Fisher
Mary Leonard Fitzpatrick
Catherine Mary Fitzsimons

Gail G. Forsyth
Helen Fox-O'Brien
Catherine C. French
Pamela Gaynor
Kate A. Geiger
Jane Gerritzen
Kathleen Gibboney
Susan Johann Gilardi
Shannon Gilroy
Marion Glennon
Penny Green
Kathleen M. Gregg
Mary Lou Greibus
Kathleen Grimm
Susan Guheen-Desautels
Mary Katherine Gumerlock
Rose Marie B. Guzzo
Elizabeth O'Neill Hamlin
Betty T. Harris
Joan Walet Hartson
Susan Haun
Jane Haupt
Sally Ann Healy
Anne Heidt
Patricia Henry
Denise Hickey
Winifred Hills
Jo Ann Holland
Connie A. Hunter
Kathryn Hutcheson
Marie Elizabeth Igleheart
Martha Irwin
Isabel Ishino
Dede Johnson
Judy Jones
Mary Helen Jordan
Cynthia Chooljian Jost
Maria Jurecky
Netchen T. Kaier
Mary A. Kane
Maggie Sieger Kaspura*
Justena Stein Kavanagh
Catherine W. Keefe
J. Caroline Kelleher
Kathleen Kelsh
Mary Elizabeth Ketchum
Donna Kissel
Angelina Kleinbub
Lauren Gray Koenig
Jeanne E. LaFazia
Linzee Evans LaGrange
Brigid S. Lamb

Susanna M. Lane
Barbara Lapres
Judith Morgan Leicht
Cornelia LeMaitre
Barbara Lopiccolo
Helen Lynch
Mary Ann MacDonald
Brenda MacLean
Mary Maloney
Catherine Mandl
Marcia Donahoe Manno
Elizabeth Anne Marr
Elizabeth Maze
Colette McBarron
Vita McCall
Madeleine McCarthy
Julie McConville
Anne McDonnell
Cathleen McGoldrick
Joan T. McKeever
Marion D. McLaughlin
Mary Ann McLean
Alice Mary McMahon
Maria Luisa Menzel
Kathy Meyer
Janet Meyering
Emma Miller
Martha Fay Miller
Holly Mills
Mary Rejent Moeller
Jasmin Morgan
Deborah Moriarty
Suzanne Newman Morris
Sally M. Morrison
Morgan Moyer
Elizabeth Moynihan
Diana Munro
Virginia Murillo
Catherine Murphy
Kevin L. Murphy
Mary T. Murphy
Moiria McBride Murphy
Sharon D. Murphy
Mary Callahan Murray
Teresa Nelson
Mary Newton
Jacqueline Thaman
Niekamp
Edith O'Brien
Maureen Sheedy O'Brien
Lucille T. O'Connor
Mary Pat Olikier
Kathleen O'Regan

Ragnhild Palmieri
Mary Alyce Pardo
Carol Sawyer Parks
Ellen Peebles
Sandra Phillips
Lauren Plumer
Susan M. Reck
Catherine B. Reedy
Beth Marie Reifers
Christine E. Reitman
Mary Ellen Reynolds
Ellen Hannigan Ribauda
Kathleen D. Ribauda
Mimi B. Richard
Sheila McCue Rider
Martha A. Robbins
Margaret Ford Rouse
Francine Rowley
Karen Rush
Catherine Ryan
Martha Berghoff Ryan
Mary Anne Salmon
Fumiko Satoda
Sallie Jac Schafer
Gertrude Schneider
Deborah Craft Schulz
Kathryn F. Schurz
Kathleen Schwarz
Kathleen Segerdahl
Eva Sereghy
Janet M. Shaw
Lisa Slaughter
Mary Jane Smith
Pamela Moore Snyder
Marie Somers
Jane Sperling
Elizabeth Spezia
Constance O. Strong
Barbara Sullivan
Constance Sullivan
Harriet K. Switzer
Lisa Tebbe
Tessie Theodores
Gloria Thompson
Margaret Thrailkill
Susan Tierney
Betty Jo Rosenthal Troilo
Sarah Bean Tyler
Susan Van Vuren
Maria Vitagliano
Elsie Volpe
Dorothea O'C. Wefing
Suzanne Desloge Weiss

HONOR ROLL, *continued*

Louise Blumenauer
Weschler
Sharon Westin
Karan Whamond
Margaret M. White
Mary White
Mary Clare White
Donna S. Widmer
Christine R. Wilmot
Alison Winter
Karen Ann Winter
Susan Wirths
M.L. Kelly Wolfington
Angele Cook Wolk
Patricia Woodley
Eleanor Blakely Zizka
Elizabeth Neville
ZurSchmiede
Margaret Zwart

FRIENDS \$1-\$99

Margaret Ackerman
Elizabeth Scott Adams
Cynthia Allen
Coco Alvarez-Mena
Macki Monica
Alvarez-Mena
Peanut Alvarez-Mena
Pilar Alvarez-Mena
Mary Andrews
Elaine Arace
Jeanne Asdourian
Maria Asteinza
Jean E. Bautz, RSCJ
Ann Beatty
Sandra M. Beecher
Margaret Behan
Marion Blanchard
Margaret Hochreiter
Bleem
Mary Jo Boschert
Dulcy Brainard
Alice C. Brennan
Helen Brennan
Anne C. Brescia
Colleen Hollway Brever
Mary Ella Bronson
Ann Fleming Brown
Kathleen Trost Brown
Nancy Viano Brown
Jennifer Buckland
Chelsea Burdic
Anne E. Burkholder

Mary P. Burns
Patricia Battle Burt
Barbara Anne Cagney
Ann Caire, RSCJ
Margaret M. Caire, RSCJ
Alice M. Callagy
Aileen Callahan
Margaret Callen
Muriel Cameron, RSCJ
Brenda Camou
Maria Candito
Helen M. Cannistraci
Mary Capobianchi
Suzanne G. Carpenter
Anne S. Carty
Elizabeth A. Carty
Elizabeth C. Caserta
Alberta Seabold Casey
Judith A. Cassidy
Susan K. Catron
Mary Elizabeth Cavallaro
Heather Chaney
Kaye Cherry, RSCJ
Mary Dolores C. Ciraulo
Paula Schmidt Clauser
Eleanor Pope Clem
Katharine Cobb
Elizabeth B. Cole
Irene Coleman
Margaret Sheehy Collins
Maureen Collins
Colorado Alumnae of
the Sacred Heart
Lillian Conaghan, RSCJ
Jane Grant Conarchy
Eugene Connolly
Sheila Carey Connolly
Shirley Connolly
Louise G. Conway
Maria Peon Coombs
Mildred A. Copeland
Ruthanne Watkins
Cramer
Jeanne Crayton
Emma Crisler
M. Catherine Crofton
Sandra Lane Cross
Laura Maria Cuesta
Colleen Curry
Margaret Dagit
Mary Helen Daly
Ann Dames
Rita Hoppe Darling

Fran de la Chapelle, RSCJ
Kathleen A. DeJohn
Katherine Delehaunty
Nancy P. Demko
Kathleen McAuliffe
Desloge
Mara Asela Diaz
Kathleen Marie
DiGiovanna
Gail Dillon
Patricia A. Dixon
Dolores McKeever
Donahue
Joan E. Donaldson
Joan K. Downey
Patricia Doyle
Carolyn Driscoll
Deborah Newhouse
Dunham
Louise Meiere Dunn
Jean Thomas Dwyer
Charla Dziedzic
Mariah E. Echele
Ninette Edmiston
Ann Ehlers
Patricia Ellingwood
Rosalind Elliott
Elmhurst Alumnae
Association
Louise ElMofty
Karen Emge
Anne Eppig, RSCJ
Mary Ann Esson
Kum Soon Eum, RSCJ
Conchy Fajardo-Hopkins
Sandra Cassell Farrell
Rosemary Artman Fast
Deborah Faust
Ellen Feeney
Margaret Feeney
Rae Fenton
Kathleen Ferguson
Laurel Fernandes
Linda Fikes
Catherine Fitch
Barbara Fitzgerald
Mary Bridget
Flaherty, RSCJ
Marie-Louise Flick, RSCJ
Brigid Flynn
Avery B. Foster
Mary L. Fournie
RoseMary M. Freedman
Frances Fremin

Emily Garay-Miller
Mary Louise Gavan, RSCJ
Margaret Gebhard
George E. Hoare
Memorial Co. Inc.
Marie A. Giehler
Lisa M. Gilkeson
Angela Gillespie
Susan Giroux
Maureen Glavin, RSCJ
Alice A. Grayson
Diane Huajardo Green
Shirley Griffin
Eveline Guest-Teich
Melanie Guste, RSCJ
Margaret Haberlin
Janet Haeger
Mary Catherin
Hagele, RSCJ
Carol A. Haggarty, RSCJ
Louise A. Haines
Kathleen Halayko
Sheila Hammond, RSCJ
Clara Hansbery
Nancy Hardart
Barbara Harkins
Katherine Hartl
Pamela Whitney Hayes
Joan M. Heenahan
Kay Heffernan
Mary C. Henkel
Carolyn S. Henry
Irene Marie Herbst, RSCJ
Marina Hernandez, RSCJ
Mr. & Mrs. David Herzig
Christine Heuring
Jennifer Hevenor
Jeanne C. Hevesy
Jane Thatcher
Hickenlooper
Mary Lynne Hickey
Adrienne M. Hiddleson
Barbara Higgins
Janet B. Higgins
Katharine Higgins
Ann Hinshaw
Amy Zimmerman
Hodges
Catherine Hoehn
Agatha Hoff
Jane Hollo
Lucille M. Hornby
Mary Jo Howard

Kathleen Hughes, RSCJ
Katherine Hall Hunter
Joanne Hynek
Mary Helen Ish
Patricia Jacobs
Brooke Janis
Patricia Dowley Jeffries
Mary Louise
Jenkins, RSCJ
Gina Ann Johnson
Sandra Johnson
Barbara Jones
Carolyn O. Jones
Marilyn Jones
Kathryn J. Jordan
Nina Capra Jordan
Patricia Kamlin
Carol D. Kane
Sharon Karam, RSCJ
Rose Ann Kehoe
Kathryn Keigher
Mary Zoe Keithley
Maureen E. Kelly
Julie Kenary
Susan Lorraine Kennedy
Helen Keough
Katharine H. Kernan
Sara Burchell Kestner
Mary Ellen Keegan
Keyser
Elizabeth A. King
Patricia Klebba
Patricia Koch
Kathleen S. Kocsis
Geraldine Roche Koesters
Rosann F. Kohler
Dolores Kolf
Susan Koller
Susan Kratochvil
Mary Ann Kriegshauser
Elizabeth Kruger
Priscilla Kwakye
Amy La Pietra
Germaine Laberge
Gertrude LaFerte'
Rita Lorraine
Landry, RSCJ
Kathleen B. Langdon
Mary Kate Leahy
Henriette Leanos
Zelia Lebeau
Marie Antoinette Lederer
Carol Lee

HONOR ROLL, *continued*

Cora B. LePorin
Jennifer Nass Leslie
Carol D. Levis
Lynne L. Lieux, RSCJ
Margaret Alice Lieux
Margaret McGinness
Liggett
Kate Lobdell
Helen Locke
Julieta Lopez
Mary Kay Love
Claire E. Lowery
Devon Loweth
Maureen D. Luke
Nancy C. Lutes
Anne F. Mabley
Carla Mabry
Sally S. MacDonald
Kathleen H. Maley
Kay Mallon
Anne Kathline Malone
Carol Malone
Alyssa Mann
Mary Mardel, RSCJ
Cynthia D. Marler
Allyson Marsiglia
Colleen H. McCadden
Anne S. McCarthy
Marina McCarthy
Patricia Brennan
McCarthy
Irene McCourt
Colleen McCoy
Nancy McEwen
Margaret P. McGarry
Mary Beth McGivern
Mary E. McGoe
Ellen McGovern
Margaret McGovern
Regina W. McGrath
Katharine McIntire
Pamela K. McKeen
Sharron M. McKenzie
Maureen D. McMahon
Helen McPherson
Karen Keith McRae
Margaret Meehan
Sharon C. Melchior
Maria Matilde Menocal
Ann Mercier
Suzanne M. Metsker
Margaret Mary
Miller, RSCJ
Shirley Miller, RSCJ

William H. Miller
Anne B. Milligan
Elizabeth Monahan
Ruthann Moorman
Sheila M. Moran
Ann F. Morgan
Adrienne Moser
Terry J. Moyer
Janet Mug
Shirley Morrin Mulligan
Margaret Mary
Munch, RSCJ
Joan Murphy
Susan P. Murphy
Dorothy Murray, RSCJ
Mary Louise Myers
Carole Ann Neff
Thaddeus Niezabytowski
Elisabeth Anne Norvik
Carol Ann Nulk
Gloria S. O'Brien
Nancy C. Ochs
Joann P. O'Connell
Gail O'Donnell, RSCJ
Sharon L. Ohl
Geraldine M. O'Holleran
Valerie Moore O'Keeffe
Beatriz Maria Olivera
Michelle O'Neal
Patricia S. O'Neill
Mary Lani Owen
Josephine Pallasch
Norma A. Paolini
Diane Pecha
Chloe Pedalino
Elizabeth Maria Perez
Kathleen Pettersen
John Phyllis
M. Diane Pierce
Sherry Pitchford
Denise Pool
Barbara Price
Florence J. Pulley
Carolyn Puricelli-Boyd
Camilla Kuhn Quinn
Mary Joan Meaney Quinn
Mary Virginia Quinn
Alicia Quirk
Linda A. Rahl
Carol McCurdy
Regenauer
Margaret Reidy
Caitlyn Marie Reinfurt
Patricia Reiss, RSCJ

Canice Timothy Rice Jr.
Mary Kathleen Rice
Betsy Richardson
Helen A. Riechmann
Maribeth Riordan
Mary Patricia Rives, RSCJ
Jacqueline Roach
Ann S. Robins
Lorraine Roddy
Virginia M. Rodee, RSCJ
Rosanne Slattery
Rodillosso
Sally J. Rogers
Geraldine Rohde
Elaine Rolfes
Olga Seiferth Rome
Daphne Root
Yvonne E. Rucker
Marilyn Curran Ryan
Mary Patricia Ryan, RSCJ
Maureen Elizabeth Ryan
Francisca A. Sabadie
Jane Sattler
Mary Ann Sauerburger
Mary Noel Adams
Saunders
Mary Elizabeth Scharf
Susan M. Schmidt
Juliana M. Schmitt
Helen L. Schoene
Mary Schumacher, RSCJ
Virginia Schumann, RSCJ
Katherine Seleny
Joan Sessa
Marie P. Shannon
Elaine McHugh Sharer
Sandra Kristina
Shargabian
Paula H. Shurtz
Anita L. Siler
Carol Simmons
Brenda Simpson
Abigail Slattery
Jane Smith
Ursula Smith
Christine Babicki Sommer
Mary E. Spanberger
Laura Spinelli
Adeline Hintlian Spivey
Kimberly A. Staten
Helen Stillwell
Joan Straka
Maria E. Stratton
Jacqueline Strauch

Katherine Stromberg
Karen Sullivan
Kimberly L. Sullivan
Regina Swords
Carole Tekulve
Carol Temme
Sally Teppert
Margaret A. Thibodaux
Henrietta H. Thomas
Susan D. Thomas
Barbara Seta Thompson
Patricia K. Thompson
Sara Kay Thompson,
RSCJ
Audrey Threlkeld
Barbara Thunder-Barnes
Ellen Tierney
Jane Mary Tighe
Paula Toner, RSCJ
Marianna Torrano, RSCJ
Maria Toscas
Jan Trogdon
Janet Vanden
Ms. A. Ver Plank
Mary Vimmerstedt
Kathleen Vivian
Darina Vogel
Deanna Rose Von Bargen,
RSCJ
Roseanne Voute
Margaret Wallingford
Carol Ward
Susan Wasilauskas
Virginia Waterman Casey
Ninette Webster
Melissa Weiksnar
Cynthia Whalen
Susan Whalen
Erin R. Wheeler
Susan M. Whelan
Ellen Kelley White
Sr. Michael White, C.S.J.
Helen B. Williams
Rev. Thomas E. Wilson
Bridget Withers
Marie-Louise Wolfington,
RSCJ
Loretta A. Wooten
Barbara M. Wright
Mary E. Zaborskis
Valerie Zona
Janet Zumstein
Daniel T. Zwart

ENDOWMENT

Cynthia Allen
Anonymous
Peggy Badenhansen
Nancy Bowring
Suzanne Carpenter
Pamela D'Ambrosio
Lily Duggan
Estate of Mary Kay Farley
Andrea Fisher
Kathleen Halayko
Sally Ann Healy
Jo Ann Holland
Jane Hollo
Barbara Lapres
Carol Malone
Deborah Moriarty
Geri O'Holleran
Rosemary O'Neil
Gwen Pike
Carolyn Price
Kathleen Ribaud
Mary Saunders
Lisa Tebbe — *In tribute
to Jeanne Burke O'Fallon*
Margaret Thraillkill
Maria Toscas

MEMORIALS AND HONORARIA

In Memory of:

Maria Aragon
Colorado Alumnae
of the Sacred Heart
Margaret Randall Ash
Colorado Alumnae
of the Sacred Heart
Beverly Beckley
Gwen Larke Pike
James C. Botticelli
Louise Meiere Dunn
Barbara Brown Lopiccolo
Jeanne Burke O'Fallon
Carolyn Lindeman Price
Maureen Elizabeth Ryan
Nancy Boyle, RSCJ
Elaine Amy

**Donated to scholarship contest*

HONOR ROLL, *continued*

Nancy Bremner, RSCJ
Mary Faith Coath Cook

John Bungart
Connie A. Hunter

Alice Doclot Burns
Mr. & Mrs. Scott Bearse
Mr. & Mrs. David Blume
Sarah Blume
Sherrill Bounnell and
The Weekend Girls
Alice J. Burns
Mary P. Burns
Peter S. Burns
John F. Burns II
Julie Burns Doll
Jeanne Burke O'Fallon
Judith Whalen Conley
Elmhurst Alumnae
Association
Rae Fenton
Ms. A. Ver Plank
Mary L. Forsyth
George E. Hoare
Memorial Co, Inc
Janet Haeger
Mr. & Mrs. David Herzig
Jennifer Hevenor
Amy Johantgen La Pietra
Holly Mills
Maureen Elizabeth Ryan
Allison K. Ryder
Susan Whalen
Rev. Thomas E. Wilson
Valerie Zona

Georgia Bader Cassin
Anonymous

Mary Cline
Gwen Larke Pike

Lucille R. Marchese Circo
Nanette Circo

Mary T. Clark, RSCJ
Kaye Cherry, RSCJ

*Virginia "Bunny"
Yates Connolly*
Eugene Connolly

Eleanor Corkery
Christopher J. Corkery

Calvin B. Cotner
Sharon D. Murphy

Marcia Garvan Coyle
Daphne D. Skouras Root

Malin Craig, RSCJ
Helen Craig Lynch
Margaret Craig Sheehy

Leanne McCord Decker
Joan Molinari Decker

Priscilla Durkin
Janet McNerney Sargent
Henrietta Holton Thomas

Mary Kay Tracy Farley
Janet McKay Burke
Mary Ellen Reynolds

Joanne Fitzpatrick, RSCJ
Gloria Waris Thompson

Sally M. Furay, RSCJ
Janet Naidl Siler

Rita Chambers Gannon
Pamela Moore Snyder

Katharine T. Hargrove, RSCJ
Kathryn Foley Schurz

*Nancy, Kathie, and
Bubby Hartson*
Joan Walet Hartson

Muriel Heide, RSCJ
Constance Sullivan

Franceen Schneider Hoyt
Carolyn Puricelli-Boyd

Anita Hyslop, RSCJ
Marilyn Curran Ryan

Eileen McMahan Keech
Mary Pat Olier

Lorna Adele Kinkadee
Sallie Jac Hill Schafer

Agnes & Edwin Kress
Mary Helen Meade

Joseph H. Kuebel Jr.
M. Catherine Crofton

Meghan La Rocca
Maureen Rogers Kelly

Suzie Leiphrart
Gwen Larke Pike

*Mr. & Mrs.
Samuel V. Lizzo*
Frances Lizzo Salvi

Frances M. Lum
Victoria Lum Chuck

Catherine Maguire, RSCJ
Susan Casey Engel

Constance Marie Mandl
Catherine Mandl

Anna Mae Marheineke, RSCJ
Christine Babicki
Sommer

Nancy McAuley, RSCJ
Avery B. West Foster

Margaret McGuire
Colorado Alumnae of the
Sacred Heart

Mary Catherine McKay, RSCJ
Kathryn Ramage
Hutcheson

*Joan McKenna, RSCJ &
Kathleen McKenna*
Katharine Ashley Cobb

V. McMonagle, RSCJ
Ruthanne Watkins
Cramer

Gus and Martha Montes
Barbara Montes Wright

M. Odeide Mouton, RSCJ
Constance Burdzy Donius

Hubert G. Neff
Carole Ann Sheers Neff

*Dorothea Cromelin
O'Connell*
Hon. Dorothea Wefing

Dennis O'Neill
Patricia Skelly O'Neill

Catherine Owens, RSCJ
Sally Street MacDonald

June Dwyer Play
Carol Dwyer Ward

*Katherine Reilly Reid &
Pattie Reid*
Camilla Kuhn Quinn

Mary E. Ryan
Mary L. Forsyth
Jeanne Burke O'Fallon

Alicia Sarre, RSCJ
Isabel Ishino

Clare Shanley, RSCJ
Darina Vogel

Jan Smith
Colorado Alumnae
of the Sacred Heart

Bonnie Bosworth Steen
Betsy Monroe Richardson

*Nancy McDonough
Stemwedel*
Deborah Doyle Faust

Greg Thompson
Colorado Alumnae
of the Sacred Heart

Philomene Tiernan, RSCJ
Judy Johnstone Jones

Mother Traner
Dolores Stone Kolf

Matthew Trimbell
Anonymous

Lorry Goncz Walsh
Pamela Moore Snyder

Marie Howe Whalen
Judith Whalen Conley
Maureen Elizabeth Ryan

Margaret Mullen Wright
Mary Helen Mullen Ish

In Honor of/Tribute To:

*All the Sacred Heart
Women Who Taught
So Well*
Mary White

Bettie Martin Alsop
Ninette Alsop Edmiston

*Marcie Eason Amory —
80th Birthday*
Mary Maloney

Corinne Lapeyre Barry
Mimi B. Richard

Beatrice Brenman, RSCJ
Sheilah Tilbrooke Cloud
Sally Teppert

Alice J. Burns
Mimi O'Hagan

Mary A. Bush, RSCJ
Terry Brown Moyer

Alice Callagy — Birthday
Mary Dolores Smith
Ciraulo

*Class of 1950 — Sheridan
Road Academy*
Helen Kuhn Brennan

Lillian Conaghan, RSCJ
Nancy Crawford McEwen
Patricia Casper

Helen Daley, RSCJ
Anonymous

Jan Dunn, RSCJ
Jane Alexanian Sperling

Mary B. Flaherty, RSCJ
Marilyn Jones

Karen Witt German
Michaela Marcil Belatti

Margaret Gorman, RSCJ
Helen Fox-O'Brien

Gerry Grossman
Anonymous

Sheila Hammond, RSCJ
Patricia Coyle Ellingwood

Betsy Hartson, RSCJ
Jane Alexanian Sperling

Maggie Sieger Kaspura
Jeanne Burke O'Fallon

Joan Kirby, RSCJ
Dulcy Brainard

Nancy Lassotovitch, RSCJ
Teresa Nelson

Lorraine Lawrence, RSCJ
Anita L. Bosselet Siler

Mary Kathleen Leahy
Mary Kate Leahy

Mary (Be) Mardel, RSCJ
Mary Louise Myers
Patricia Woodley

Muriel Hopper McCarthy
Muriel McCarthy Harris

*Srs. Tainter, O'Meara,
& McNally*
Thelma Kenefick
Patricia Ford Casper

Jane Miller, RSCJ
Teresa Jones Cabrinha

Margaret Moira O'Brien
Germaine Laberge

Gail O'Donnell, RSCJ
Maureen Collins
Julie Joyce Kenary

*Religious of the
Sacred Heart*
Adrienne McGuire
Hiddleson

*Religious of the Sacred
Heart of Jesus*
Sharon Marie Meyerkamp

Retired Nuns at Kenwood
Rosemary Mitchell
Freedman

Retired Religious Nuns
Colette Long McBarron

Barbara Rogers, RSCJ
Julie Joyce Kenary

*The RSCJ at Duchesne
Omaha & Maryville*
Barbara Burke Hugenberg

*Wally Gunn Strobach -
Birthday*
Jeanne Burke O'Fallon

*Villa Duchesne 50th
Reunion Committee*
Carolyn Osterholt Jones

YOUNG ALUM SPOTLIGHT

Mary Grace Henry Changes Lives, One Headband at a Time

It's not every day that a young girl asks for a sewing machine for her birthday. But, that's exactly what Mary Grace Henry (Convent of the Sacred Heart, Greenwich '15) did when she turned 12.

Mary Grace decided that she wanted to make and sell hair accessories and use the money to help educate young girls in Africa. After a brief sewing lesson, this self-taught seamstress began sewing reversible hair bands in her basement. Her first boutique was Convent's bookstore, which promptly sold out her entire stock. As business grew, she created a non-profit, Reverse the Course (reversethecourse.org). In just six years, she has raised over \$200,000 to sponsor the education of 67 young girls in Kenya and Uganda, the equivalent of 160 years of education!

A Sacred Heart "lifer," from kindergarten to senior year, Mary Grace credits the Network and the Goals and Criteria for inspiring her to make a difference. "Through the Network I was exposed to the issue of girls' education especially with our sister school in Uganda. We would do various fundraising activities and drives to help the girls there," she says. "As I became older, I started to learn more about the issue and started doing more service work as part of Goal 3: A social awareness which impels to action. The ideas that I was part of a global community and had a duty to help others in any way that I could inspired me to start my own business to pay for girls' tuition."

Her commitment to girls' education came from her own experience. "My education has had such a huge impact on my life that I cannot imagine who I would be without it," she says. "I also feel that an education enables students to make their own choices and become their own individual. Furthermore, education is a lifelong gift. It will not only help a single person but it will spark long-term, sustainable change because girls will reinvest over 90 percent of their income back into their families and communities stimulating growth; this is in comparison to boys who will only reinvest about 30-40 percent."



Students at St. Al's



An assortment of Mary Grace's creations. Visit reversethecourse.org for the full collection.

"Educating a girl can reverse the course of her life, change the course of a community...and the country."

— Mary Grace Henry, Founder,
Reverse the Course





Mary Grace with student Mercy and her mother, Kenya 2014.

Working through U.S.-based NGO's (non-governmental organizations), Mary Grace is able to "have a team both here in the U.S. and a team on the ground in the locations I am working in. It is through these organizations, Maasai Girls' Education Fund (in Kenya) and Komo Learning Centres (in Uganda), that I find and select the girls I sponsor."

Since 2011, Mary Grace has visited Africa three times. This allows her to meet the girls and build a relationship with them. She sponsors four years of education, which includes tuition, text books, school supplies, uniforms and shoes. "During each of my visits I meet with students, faculty and school and foundation administrators (of the foundations I work with) to discuss the various programs and schools that I work with to ensure that everything is going well and assess what changes need to be made and how my students are doing," she says. "It also helps me develop a true, lasting bond with the girls I sponsor which is really why I started Reverse the Course in the first place." On her most recent trip to Kenya and Uganda, Mary Grace filmed a documentary *Tumaini* (Swahili for Hope) which will be released this fall. To view a trailer, visit: <https://www.youtube.com/watch?v=uA8R0UH0o7E>.

Last fall, Mary Grace was a guest on the *Queen Latifah Show*, where she explained, "I started a hair accessory company because I also wanted the customers to get involved in this movement that I wanted to start for girls' education ... Everyone can do it, too. Everyone can take part and find something one is passionate about and make one's dream come true."

Queen Latifah responded, "You are so important to the world ... This is putting thought into action and realizing we are one big, global community...we are all one." Queen Latifah was so impressed with Mary Grace's efforts that she donated \$4,000 to cover the cost of four years of education for one girl.

Now a freshman at Notre Dame, Mary Grace intends to major in the Program of Liberal Studies. "It's essentially grounded in a Great Books curriculum but I would also have courses in fine arts, history, science, philosophy, theology and literature," she says. "I hope to be able to somehow make a difference through the career I have and positively impact other's lives. How will I actually do that? I have no clue! Currently I'm working on studying for my calculus exam so I'll just take it one step at a time."

Mary Grace concludes, "What I really hope my story inspires in people is to get involved – to take action for any issue that they are passionate about and to not be afraid to start. I also hope to reach my goal of supporting 100 girls next year and any donation and spread of word will help me achieve that goal."

Mary Grace's entrepreneurship is inspiring! To support Mary Grace's dream and help her continue to make other young girls' dreams come true, check out her collection on reversethecourse.org.

BERCHMANS GRADUATES FIRST CLASS



ABOVE: Lucky Thirteen, the first class to graduate from Berchmans Academy of the Sacred Heart. Left to right: Grant Corley, Bruce Wiltz, Joseph Aubert, Grant Melancon, Jacob Moreau (Valedictorian), Daniel Marks, Seth Mouton, Dylan Marks, Bryan Thibodeaux (Salutatorian), Austin Wilder, Blaise Broussard, Kaleb Frey and Andrew Smith.

Many had been anticipating this day! In May, Berchmans Academy of the Sacred Heart celebrated its first graduating class, with 13 young men, dashing in seersucker suits and red bow ties, the perfect nod to their Southern roots.

Berchmans opened in 2006 on the historic Grand Coteau campus alongside its sister school, The Academy of the Sacred Heart, and educates boys in grades PreK 3-12. Named for St. John Berchmans, the school is the site of where a miracle attributed to him took place. To learn more, visit sshcoteau.org.

Excessive rains didn't dampen the joy of the graduates and their families as mass was held in the Chapel (built in 1850), instead of under the historic oaks. Known as Oak Alley, through the years, students and families have looked forward to graduation beneath the iconic trees. The oaks were planted by the first Jesuit rector of St. Charles College in Grand Coteau to provide shade and protection as the Jesuit priests traveled to the Academy to serve as chaplains for the Religious and students. In keeping with Sacred Heart tradition, the Berchmans graduates received their diplomas under the oaks.

The Class of '15 also chose to honor and retain another Sacred Heart tradition — the bell ringing. The bell, now installed in the gardens, was originally on a rooftop and was used primarily to call RSCJ to mass, prayer and meals throughout the day. Ringing the bell signifies the last calling of the students and their last time to ring it as students on the Coteau campus. Embracing Sacred Heart tradition while making their own history — congratulations to the Berchmans Class of 2015 and welcome to the AASH!



Ringling the bell signifies the last calling of the students and their last time to ring it as students on the Coteau campus.



Kaleb Frey receives his diploma from Chairman of the Board, Chris Rader, Fran de la Chapelle, RSCJ and Meg Causey, RSCJ.

ALUM TO WATCH



Katie Ledecky at her graduation from Stone Ridge with Head of School, Catherine Ronan Karrels '86.

Katie Ledecky, American competition swimmer, Olympic gold medalist, nine-time world champion, and current world record holder in multiple events, is a 2015 graduate of Stone Ridge School of the Sacred Heart in Bethesda, Md. She most recently became the first swimmer to win four individual freestyle gold medals ever at World Championships in Kazan, Russia. Katie broke her own world record for the 800-meter freestyle and is the current world record holder for the 400, 800 and 1,500 freestyle.

Katie has deferred her freshman year at Stanford University to train for the U.S. National Team for the 2016 Summer Olympics in Rio de Janeiro. We know that Sacred Heart alums around the world will be rooting for her!

AMASC NEWS



The 2014-18 AMASC Board in Scottsdale, Ariz.

Along with being members of AASH, alums are also members of the international association, AMASC (Association Mondiale des Anciennes et Anciens du Sacré Cœur). Last November, Marisa Moreno de Malcher from Mexico was elected president during the World Congress held in Scottsdale, Ariz. Wendy Delery Hills, The Rosary '71, is serving as the Regional Coordinator for North America. The theme of their four-year term is:

SOPHIE'S LEGACY, A GIFT FOR THE WORLD

L'HÉRITAGE DE SOPHIE, UN CADEAU POUR LE MONDE

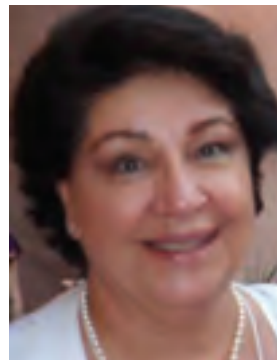
LA HERENCIA DE SOFÍA, UN REGALO PARA EL MUNDO

Sister Kathleen Conan, RSCJ, Superior General, has appealed to AMASC to foster Villa Jardin, a project the Society has in Buenos Aires, Argentina. The Argentinian alumni are going to provide financial aid within their means, but much more is needed.

"As we all know fostering a Society's project from AMASC is the visible way to show our solidarity from around the world, this support comes directly from AMASC, which means from you all," writes Marisa. "Nevertheless I invite you to know what our dear RSCJ are doing in your own Provinces, by revealing their projects and supporting them from your own associations."

Colegio Sagrado Corazon Al-Cal de Villa Jardin is a school founded in the 60s by a group of Argentinian alumnae to serve a poor neighborhood. In 1999 the RSCJ took over the administration of the school with about 500 students, which has now doubled. Now, one of the old buildings is in need of repairs and additional space to accommodate new classes, improve existing spaces, furnish and equip them to provide the best possible academic experience. To learn more about Villa Jardin, visit: <http://www.amasc-sacrecoeur.org/activities/AMASCproject>.

"We are trying to build a worldwide project that can be shared by thinking of our identity as members of the Sacred Heart Family, our need to share with others the heritage we have received and to live our own mission discovering and showing the Love of the Sacred Heart," explains Marisa.



President Marisa Moreno de Malcher

NOURISHING OUR SPIRIT

Preparing to Celebrate 200 Years of Sacred Heart Education



It's never too early to begin planning for a major milestone! A few years ago, the Academy of the Sacred Heart in St. Charles, Mo. began planning for its Bicentennial in 2018. With numerous plans in place, from a 200-year history written by Alumni Director Jane Cannon, to lesson plans drafted to be shared with area parish schools, to a re-enactment of Philippine's arrival on the banks of the Missouri River, excitement is building as the beginning of Sacred Heart education in the U.S. is commemorated.

The significance of this occasion is not just celebrated by Philippine's first school. "The Network of Sacred Heart Schools is celebrating 200 years of Sacred Heart education, the Society of the Sacred Heart is celebrating 200 years of internationality, the United States - Canada Province of the Society is celebrating 200 years of discovering and revealing God's Love in North America, the Archdiocese of St. Louis is celebrating 200 years of Catholic education and the county of St. Charles is celebrating 200 years of formal education (public or private)," explains Maureen Glavin, RSCJ, Head of School.

ABOVE: The Shrine of St. Philippine Duchesne recently received a bit of a facelift as part of the five-year plan undertaken by the Alumni Association.

In anticipation of the Bicentennial and the additional visitors it will bring, the Shrine of St. Philippine Duchesne (on the grounds of the Academy) received a bit of a face lift. As part of the five-year plan undertaken by the Alumni Association, one of the needs identified by the administration was a way to accommodate pilgrims who arrive at a time when no volunteer docent is on duty. The Marge Schott Foundation generously joined in pursuing this noble goal.

Educational information (both visual and audio) has been mounted on the walls adjacent to the west door of the Shrine, which will now serve as a self-guided tour opportunity. Previously, on the days when no docent was available, it was quite possible that a visitor might come and go without having any experience of who St. Philippine Duchesne was, what she did and why she had been canonized. Half of this display “travels” with the reader from France to New Orleans, to St. Louis, St. Charles, Florissant, and Kansas, returning to the Academy for the last ten years and death of Mother Duchesne. The other wall tells of her several burial places (culminating in the Shrine), names prelates in the Church who honored her, and declares the impact that her missionary endeavor had on the Archdiocese of St. Louis and the Society of the Sacred Heart in the Western Hemisphere.

Other enhancements rendered by this much-needed project include: better lighting and an attractive log cabin image in the niche that houses St. Philippine’s primitive chair and foot warmer, better lighting and signage around her sarcophagus, and better lighting of the large banner which hung in front of St. Peter’s Basilica the morning of the canonization in 1988. A committee of Religious of the Sacred Heart and lay personnel of the school —Lyn Osiek, RSCJ, Fran Gimber, RSCJ, Maureen Glavin, RSCJ, Jane Cannon, Carol Pfitzinger and Theresa Grass—worked for several years with Peter Drochelman, of The Drochelman Group, to achieve this desired outcome.

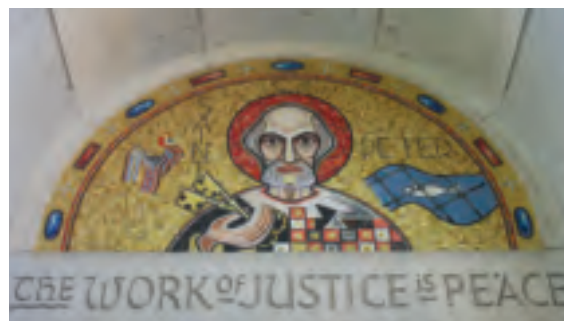
The Shrine is open daily from 8 a.m. until 4 p.m. All are welcome to this holy place for private prayer. To schedule a tour it is best to call Carol Pfitzinger, Shrine Director at 636-946-6127. New entrances to the Academy’s campus on Second, Clark or Fourth Streets will lead visitors to the Shrine parking area, which is clearly marked. The Shrine of St. Philippine Duchesne is ready to begin the Bicentennial!

*The Shrine is open
daily from 8 a.m.
until 4 p.m.*

*Call Carol Pfitzinger,
Shrine Director at
636-946-6127 to
schedule a tour.*



The Legacy of St. Philippine Duchesne is depicted on one wall of her Shrine. The opposite wall chronicles her life’s journey.



*Above: Mosaic detail
above west door
of the Shrine.*

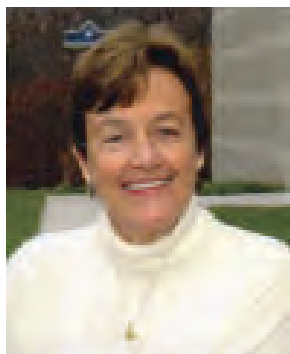


*Left: This primitive
chair and foot warmer
belonged to St.
Philippine Duchesne.*

To learn more visit <http://duchesneshrine.org/>.

TOP SHELF

Books by Sacred Heart Authors



Mornings Full of Sunlight

Elizabeth (Betty) Shanley Driscoll, Eden Hall '56

Betty's memoir brings to life beautifully her years at Eden Hall, where she attended boarding school. Eden Hall, a Sacred Heart school founded in 1847 near Philadelphia, Penn., was closed in 1969, when many boarding schools around the country were discontinuing. Then, in 1981, some of the buildings were destroyed by fire, leaving many of its alumnae deeply feeling the loss. In her book, Betty has

"captured a time and place that no longer exists," writes reviewer Laura Oliver. "This is not a told memoir – it is a shown memoir – deft, skilled, poetic and a delight to read."

A tribute to Sacred Heart education, Betty's memories illuminate another era, one of which the majority of alums of the last four or five decades do not have an experience. This book helps to connect us to that time when Latin Mass was said, nuns were in habit, and silence was kept; before, as Betty writes, "Cloister became part of the past; mothers became sisters and more than a few stepped away from teaching to respond to the needs of the poor."

Mornings Full of Sunlight is also a prayer. Weaving in and out of memories as a young child, those at Eden Hall, and through the years as she married and had her own children, Betty longingly and lovingly shows gratitude for the beauty in the world around her, in the people and places and in the passing of time. By sharing her gratitude, she evokes a sense of history, awakens in us our own memories and ensures the story will remain.

Betty received a master's degree in liberal arts from Notre Dame University of Maryland and has an M.F.A. in creative nonfiction from Goucher College. She has taught English and writing in schools in New Jersey, Pennsylvania and Maryland.

Betty acknowledges, "all the dedicated nuns and teachers who over the years instilled in me a love of learning and whose example I drew on during my years of teaching." Her book honors them.



Mornings Full of Sunlight
is available at amazon.com.

My Mother My Daughter: A Memoir

*Marita Freymuth Malone,
St. Charles '68*

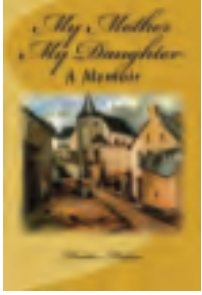


A former FBI special agent, assistant professor, lecturer and high school teacher, Marita Malone has led a curious life, punctuated with conducting more than 1,000 federal criminal investigations and official world-wide travel. Yet, it is her own story as an internationally adopted child during the aftermath of World War II and its effects that is the most important part of her history.

Marita's story begins in Germany, where she was born in the tiny village of Minderlittgen to a woman who became pregnant while married to another man. With two young children already and her husband having been expelled from the country, she found her life scrutinized and judged harshly. After three months, she gave her daughter to a Catholic orphanage. "This was the first time I would feel the sharp edge of the knife that cuts away a human bond," she writes. Two years later, she was flown to the U.S. and adopted by an older couple in St. Louis, Mo. "I was too young to comprehend the enormity of what was happening to me."

Her story is not one of a happy childhood, but is filled with wisdom and opportunities for the reader to question his or her own beliefs. Often, Marita felt alone, detached and under an inexplicable pressure. She felt as if she didn't belong and wondered what was wrong. Her life-long search for explanations for these feelings and answers to these questions sent her around the world, as well as deep into herself. Her journey is physical, mental and emotional. "The quest became my life ...and my perception of what makes a happy ending would also change over the course of that life."

Marita wrote *My Mother My Daughter: A Memoir* "to inspire adoptive parents, adult adoptees, and give guidance to students of family counseling," but general readers have also given it positive reviews.



My Mother My Daughter: A Memoir is available at amazon.com.

Marriage and family therapist Nancy Verrier writes, "One of the most fascinating and insightful adoption stories I've read. The author captures the essence of the psychological and social issues in adoption in a most intriguing way. Not only are we led through her life's struggles and adventures, but we are treated to an inner wise woman, who speaks to her throughout her life. Although the author finds disappointments and frustrations as she pursues her journey to herself, her story provides proof that with courage, honesty, and tenacity there can be a happy ending to this lifelong odyssey."

If you have a book you'd like to share with our Sacred Heart alums in Top Shelf, please contact the National Office at NationalOffice@aashnet.org or 314-569-3948.



Living Well. Living Wise: Thriving Beyond our Fashionable Stories

Mary Ellen Trahan, Woodlands Academy '70

Has pop psychology helped create a nation of "victims?" Mary Ellen Trahan, Ph.D., explores that question. A professional therapist who blends theological, psychological, and philosophical teachings, Mary Ellen offers more than a typical "self-help" book. She envisions *Living Well, Living*

Wise to help readers begin the transformation into a flourishing, mature, joyous human being with a balanced concern for self, others and the world.

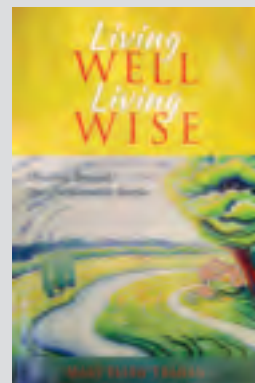
As a philosophical theologian, Mary Ellen seeks to understand new possibilities for developing human excellence, immersing herself in both classical and contemporary perspectives on the meaning and making of a good human life. Through the importance of making and telling stories of ordinary life, Mary Ellen shows that we are more than just a diagnosis or a disorder; we are spiritual pilgrims who must not short circuit our searches for good lives.

As Mary Ellen shares, her book looks at "the beauty of harmonizing messiness; it is about calling into question the ideal of psychological effectiveness while at the same time exploring the possibilities for cultivating wisdom and ethical responsiveness." Using a variety of sources and influences, from psychiatrist Robert Coles to author Walker Percy, Mary Ellen shows that one's use of free will in the development of character is vital on each person's particular life path.

Living Well, Living Wise examines our society's history of categorizing people into symptoms and illnesses such as ADHD, depression, anxiety disorder,

etc. Standard therapies and drug treatment have truly helped many people, but these tools have also minimized the richness and complexity of being human on a spiritual journey. There is no quick fix to many of the problems we may experience, but Mary Ellen shows how we find wholeness within the struggle.

Mary Ellen holds a bachelor's in religious studies from Denison University and a Ph.D. in philosophical theology from the University of Virginia. For nearly three decades, she has worked as therapist/facilitator and currently owns a practice facilitating transformation called Life Works where she helps her clients discover ways to fashion their lives by drawing on insights from a range of wisdom traditions— theological, philosophical, psychological, Eastern and Western spirituality, and narrative.



Living Well, Living Wise is available at Amazon in paperback or Kindle format and at livingwelllivingwise.com. You may also visit her Facebook page: [MaryEllenTrahan,Ph.D.](https://www.facebook.com/MaryEllenTrahan,Ph.D.)



**AASH NATIONAL OFFICE
801 SOUTH SPOEDE ROAD
ST. LOUIS, MO 63131**

Nonprofit
U.S. POSTAGE
PAID
MLP

ADDRESS SERVICE REQUESTED

Esprit de Coeur is published biannually by the Associated Alumnae and Alumni of the Sacred Heart for all alums of Sacred Heart Schools in the U.S. and Canada.

To report a change of address or if you prefer to receive *Esprit de Coeur* electronically, email us at nationaloffice@aashnet.org.

National Office: 314-569-3948

www.aashnet.org



The Associated Alumnae and Alumni of the Sacred Heart (AASH) was created in 1933 as a way to unite all children of the Sacred Heart and to further the work of the Religious of the Society of the Sacred Heart.